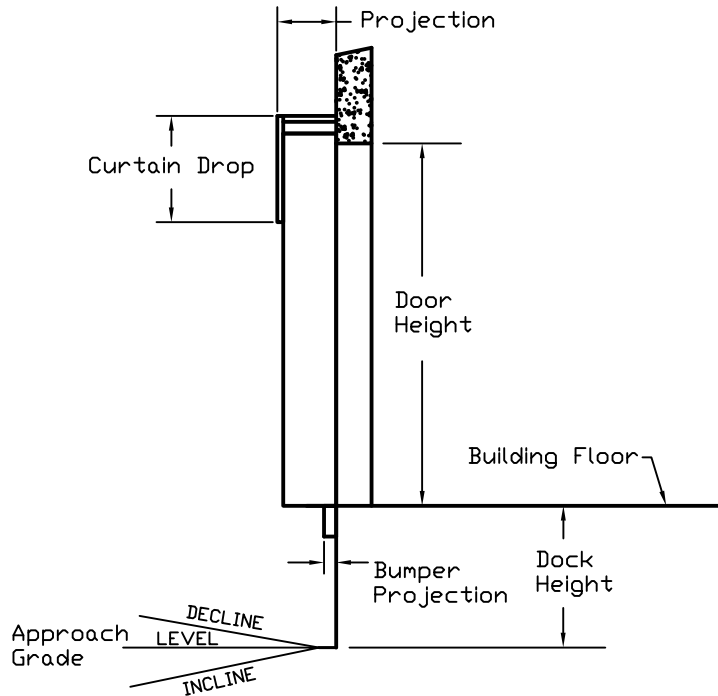
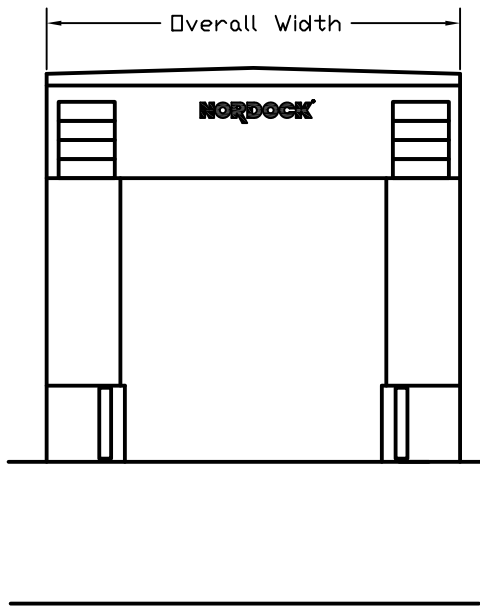
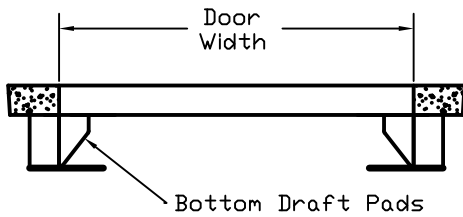


# FOAMFRAME™ SERIES FOAM SIDED DOCK SHELTER

# NORDOCK®

## FEATURE SUMMARY

- Selection of High Tear Abrasion Resistant Fabrics
- Kiln Dried Pressure Treated Backing Lumber
- Polyurethane Foam Core With 99% Memory
- Double Lock Stitched With High Strength Thread
- Vertical Curtain Wear Caps With Yellow Guide Stripes
- Bottom Draft Pads
- Galvanized Steel Mounting Hardware



### SITE DIMENSIONS

DOOR WIDTH: \_\_\_\_\_ "

DOOR HEIGHT: \_\_\_\_\_ "

DOCK HEIGHT: \_\_\_\_\_ "

BUMPER PROJECTION: \_\_\_\_\_ "

APPROACH GRADE: \_\_\_\_\_ % SLOPE

LEVEL  DECLINE  INCLINE

GRADE WALL EXTENSION: \_\_\_\_\_ "

BUILDING WALL SETBACK: \_\_\_\_\_ "

### ORDER INFORMATION

BILL TO: \_\_\_\_\_

SHIP TO: \_\_\_\_\_

ORDER DATE: \_\_\_\_\_ QUANTITY \_\_\_\_\_

COST EACH: \_\_\_\_\_ TOTAL COST \_\_\_\_\_

PURCHASE ORDER NO. \_\_\_\_\_

NOTES: \_\_\_\_\_

### SHELTER SPECIFICATIONS/OPTIONS

PANEL FABRIC: 22OZ. VINYL   
 40 OZ. VINYL   
 50 OZ. WT-90

UNIT WIDTH: 144"  \*140"  OTHER \_\_\_\_\_ "

UNIT HEIGHT: 132"  OTHER \_\_\_\_\_ "

SIDE CURTAIN: 27"  \*25"  OTHER \_\_\_\_\_ "

UNIT PROJECTION: 18"  24"  30"  OTHER \_\_\_\_\_ "

HEAD CURTAIN: 36" DROP  OTHER \_\_\_\_\_ "

TOUGH-SPLIT™ GUSSETS

OPTIONS: STEEL BACK & FRAME   
 TERMINATOR™ GAP SEAL

\*18" PROJECTION STANDARD DIMENSIONS

OTHER: \_\_\_\_\_

NOTE: TERMINATOR SEALS ARE DESIGNED FOR STANDARD 102' WIDE TRAILERS AND REQUIRES THE VERTICAL SIDE CURTAINS TO BE 14' IN FRONT OF DOCK BUMPERS WITH A 90° CLEAR OPENING WIDTH.  
 \*BLACK ONLY FOR OTHER THAN 22 & 40 OZ. VINYL