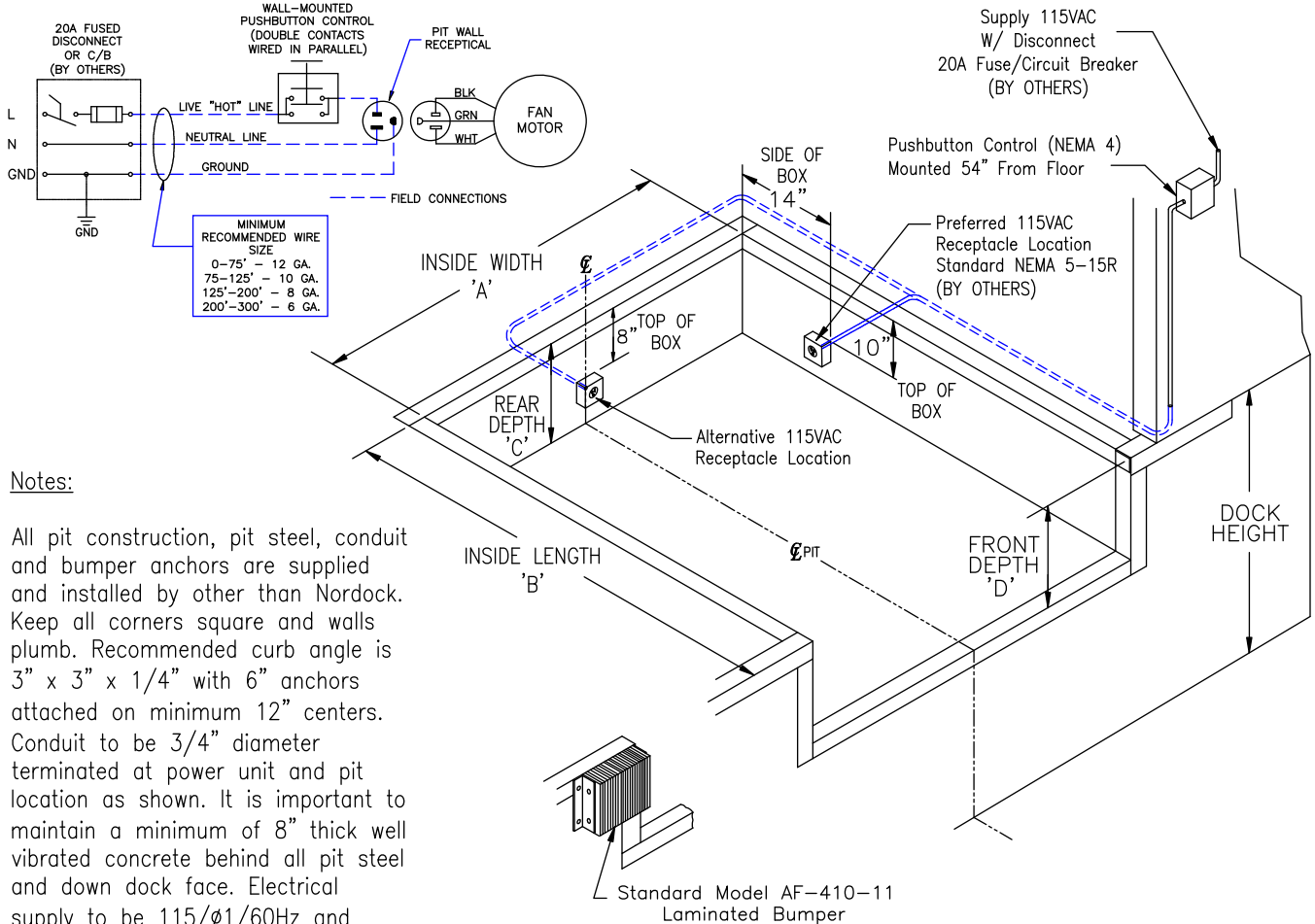


## AIRDOCK® - AD Series Dockleveler STANDARD 23" Pit Construction Details



Nominal Size	6' x 6'	6.5' x 6'	7' x 6'	6' x 8'	6.5' x 8'	7' x 8'	6' x 10'	6.5' x 10'	7' x 10'
Pit Width 'A'	74"	80"	85"	74"	80"	85"	74"	80"	85"
Pit Length 'B'	63"	63"	63"	87"	87"	87"	111"	111"	111"
* Rear Pit Depth 'C'	* 23-1/2"	* 23-1/2"	* 23-1/2"	* 23-1/2"	* 23-1/2"	* 23-1/2"	* 23-1/2"	* 23-1/2"	* 23-1/2"
* Front Pit Depth 'D'	* 24"	* 24"	* 24"	* 24"	* 24"	* 24"	* 24"	* 24"	* 24"

\* Note: Dimensions are for 23" Dockleveler depth. For 19", Refer to form 49-0119.

Model Number Composition: **AD**-(Nominal Size)-(Capacity) (i.e. AD-78-35)

Model:								Quantity:
25k	30k	35k	40k	45k	50k	Other: _____		
Lip:	16"	18"	20"	O Taper				
Job Reference:								
Location:								

CUSTOMER APPROVAL	
Customer _____	
Approved <input type="checkbox"/>	
Approved as noted <input type="checkbox"/>	
Signature _____	
Position _____	
Date _____	