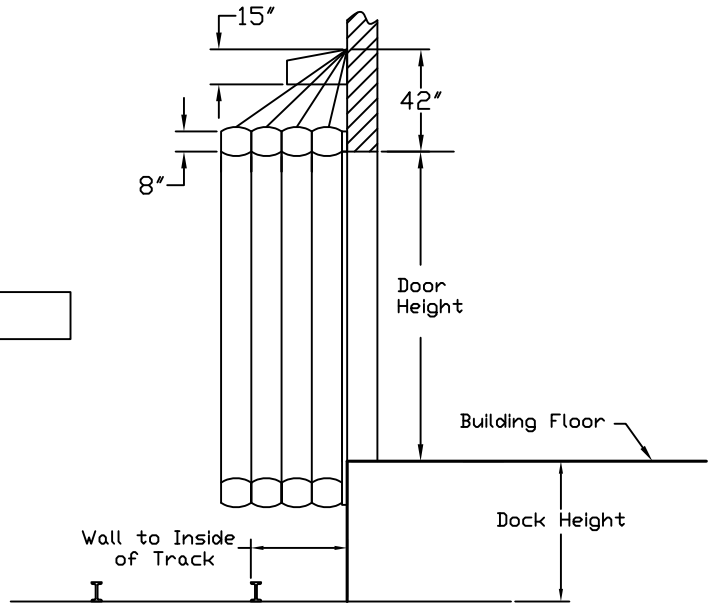
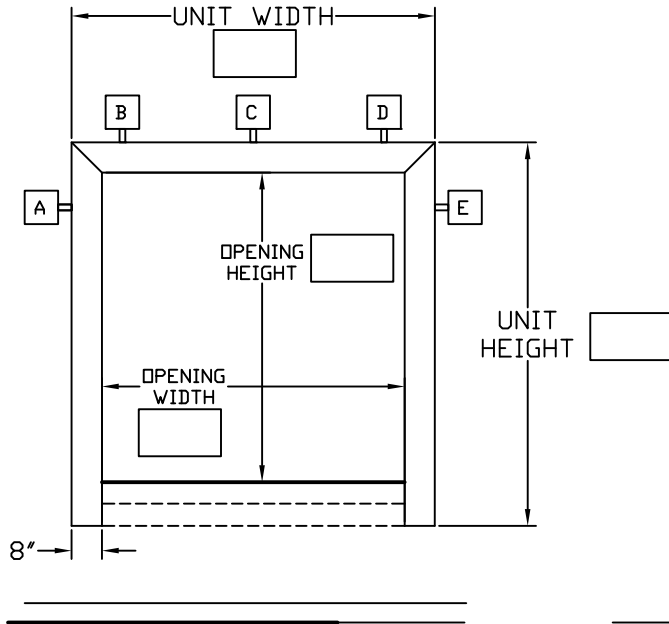


# IR-650 SERIES INFLATABLE RAIL SHELTER

# NORDOCK®



## SITE DIMENSIONS

DOOR WIDTH: \_\_\_\_\_ //

DOOR HEIGHT: \_\_\_\_\_ //

DOCK HEIGHT: \_\_\_\_\_ //

WALL TO INSIDE OF TRACK: \_\_\_\_\_ //

## ORDER INFORMATION

BILL TO: \_\_\_\_\_

SHIP TO: \_\_\_\_\_

ORDER DATE: \_\_\_\_\_ QUANTITY \_\_\_\_\_

COST EACH: \_\_\_\_\_ TOTAL COST \_\_\_\_\_

PURCHASE ORDER NO. \_\_\_\_\_

QUOTED BY: \_\_\_\_\_ DATE: \_\_\_\_\_

NOTES: \_\_\_\_\_

\_\_\_\_\_

\_\_\_\_\_

\_\_\_\_\_

## FEATURE SUMMARY

- HIGH TEAR ABRASION RESISTANT 14 OZ. FABRIC
- 1/2 HP 115V MOTOR BLOWER WITH GALVANIZED HOOD
- DOUBLE STITCHED WITH HIGH STRENGTH THREAD
- HEAVY DUTY TARP STRAP ASSEMBLY SYSTEM
- ON/OFF SWITCH WITH PILOT LIGHT
- SAG PREVENTION SHOCK CORDS
- GALVANIZED STEEL MOUNTING HARDWARE

## SPECIFICATIONS/OPTIONS

MOTOR BLOWER LOCATION: A  B  C  D  E

3 SIDED  4 SIDED  3 SIDED W/VELCRO PANEL

UNIT PROJECTION 48"  60"  OTHER \_\_\_\_\_"

WOOD BUILD OUT: \_\_\_\_\_"

AUTOMATIC ON/OFF SYSTEM

### NOTE

SEAL PROJECTION SHOULD EQUAL THE DISTANCE FROM THE WALL TO INSIDE FIRST RAIL LESS 24". PROJECTIONS OVER 60" REQUIRE A WOOD BUILD OUT.