



AN INTEGRATED WAREHOUSE SOLUTIONS BRAND

405 LAKE ROAD, UNIT 2  
BOWMANVILLE, ON L1C 4P8  
T: 905-697-4276 F: 905-697-6422  
[www.nordockinc.com](http://www.nordockinc.com)

# SURFACE MOUNT (SMD) TRANSMITTAL 2023

DATE:

S.O. #

SMD

SALES PERSON:

QUOTED BY:

PHONE#:

FAX #:

BILL TO:

SHIP TO:

END USER:

P.O. #

WEIGHT

REQUEST SHIP DATE:

SHIP VIA:

PPD

COLLECT

3RD PARTY

☐ SMD

(SMD-[nominal width 6]-[capacity], e.g. SMD-66-30)

PRICE

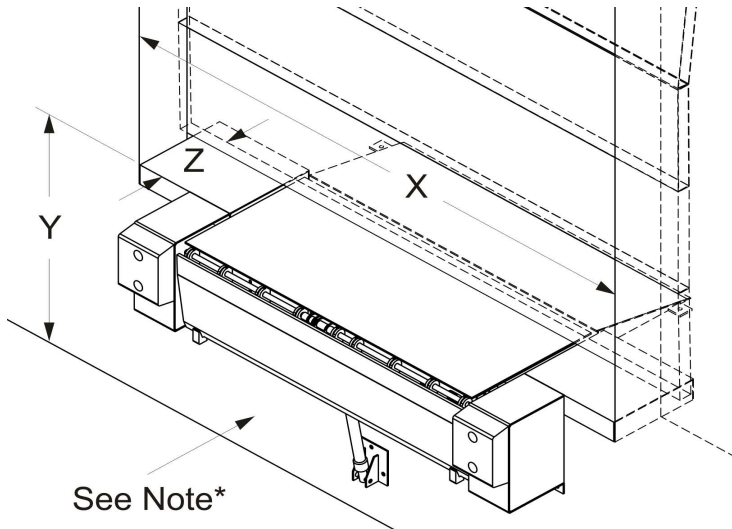
MODEL SPECIFICATION: \_\_\_\_\_

QUANTITY: \_\_\_\_\_

DECK WIDTH: ☐ 72" ☐ 83" (Note: For 83" wide lips, the standard leading edge is tapered to 78")

CAPACITY: ☐ 30K ☐ 40K ☐ 50K

LIP: ☐ 18" (STANDARD; 12" projection past 4" bumpers) ☐ 20" (OPTIONAL)



DOOR WIDTH (X): \_\_\_\_\_

Note: If no door, consult factory

DOCK HEIGHT + RAMP HEIGHT (Y): \_\_\_\_\_

Distance from top of stored deck to grade must be at least 45-1/2" (e.g. 41" dock height with min. ramp height of 4-1/2")

DOOR SETBACK (Z): \_\_\_\_\_

Distance from dock face to interior edge of door bottom seal. 18" max. or custom ramp/ risers req'd

**Note\*** Vertical poured concrete dock face shown. If other, composition detail req'd. Consult factory for custom build-outs and steel dock face plate options for cylinder mount and bumper boxes.

**Field welding required for all installations**

BUMPERS STYLE: ☐ STANDARD (1013 MOLDED C/W BOXES)  
☐ OTHER (PLEASE SPECIFY) \_\_\_\_\_

POWER UNIT LOCATION: ☐ INTERNAL ☐ REMOTE MOUNTED (OPTIONAL)

STEEL CURB EMBED: ☐ YES ☐ NO (Consult Factory)

POURED CONCRETE DOCK FACE: ☐ YES ☐ NO (Consult Factory)

VEHICLE RESTRAINT: ☐ YES (Consult factory) ☐ NO

APPROACH RAMP: RISE ☐ 4-1/2" (STANDARD) ☐ OTHER (CONSULT FACTORY) \_\_\_\_\_

LENGTH ☐ 24" (STANDARD) ☐ OTHER (CONSULT FACTORY) \_\_\_\_\_

BUILDING WALL SETBACK: \_\_\_\_\_ (Consult factory) CANTILEVER: \_\_\_\_\_ (Consult factory)

APPROACH GRADE: \_\_\_\_\_ (Consult factory if 2% or greater)

REDUCED VOLTAGE PANEL: ☐ INTEGRATED PANEL: ☐ E-STOP: ☐

POWER REQUIREMENT: ☐ SINGLE PHASE ☐ 115V ☐ 208V ☐ 230V  
☐ THREE PHASE ☐ 208V ☐ 230V ☐ 460V ☐ 600V

LIST EACH

SPECIAL REQUIREMENTS:

SPECIAL REQ  
LIST PRICE

SPECIAL REQ LIST

TOTAL LIST EACH

DISCOUNT

TOTAL NET EACH

X QTY

TOTAL

FREIGHT

TAX

TOTAL