

Mechanical Dock Leveler
Constructor Series
Model "CM"

30,000 to 45,000 lbs. Capacity

Operation and Maintenance Manual

This manual applies to CM series dock levelers manufactured on or after February 2020, with Serial Number(s) 49193 and greater.

P/N: 49-0110-X

NORDOCK INC.

Website: nordockinc.com ~ Email: sales@nordockinc.com ~ Toll free: 866-885-4276
Nordock Incorporated reserves the right to make changes to specifications without notice or obligation. Nordock products may be covered by various U.S. and foreign patents or pending applications.

Table of Contents

Table of Contents	1
Preface	2
Problems, Errors and Omissions	2
Dock Identification	2
Copyright	2
Warranty	3
Safety	4
Maintenance Procedure.....	5
Optional Lip Lock.....	6
Labels.....	7
Installation	8
Pit Check	8
Dock Installation	8
Operation	13
Standard Operation	13
Optional Below Dock End Loading	13
Optional Below Dock Service (Yielding Lip Only)	Error! Bookmark not defined.
Maintenance and Lubrication	14
Acceptable Lubricants and Oils	15
Grease.....	15
Light Oil	15
Spring Adjustment	15
Parts and Service Tables	16
Section 1 – Deck and Lip Assembly	17
Section 2 – Lip Extend Assembly	19
Section 3 – Frame Assembly.....	20
Section 4 – Optional Equipment	20
Section 5 – Deck Lift and Float Assembly	21
Section 6 – Hold Down Assembly.....	22

Preface

PLEASE READ AND UNDERSTAND THIS MANUAL COMPLETELY

This manual gives detailed information and instruction on how to operate and maintain your equipment correctly. Failure to do so could result in personal injury, and/or equipment damage. Please consider this manual a permanent part of the unit and keep it with the dock leveler for reference whenever needed.

If you have any questions about this manual, the dock leveler, it's components, or our products and services, please call us at 1-866-885-4276 and we will be happy to assist you. With proper care and maintenance, this dock leveler is designed to work effectively and efficiently for many years to come.

Problems, Errors and Omissions

This manual has been prepared with the utmost care and attention to detail as to ensure accurate parts and service information should the need arise. Nordock Incorporated believes this manual will provide the operators of this unit all the necessary information required to operate and maintain it for many years. If you believe there is an error, if you have a problem following the guidelines, or if there is information that you feel is missing from this manual, please contact us at the above number so we may attend to the issue immediately.

Dock Identification

It is very important that in order to provide the best possible service from Nordock Inc., please include the model, serial number and capacity of the dock leveler whenever you contact us. Below is the same serial number decal that will be found on the left side frame rail (standing on the dock, facing the lip). Please fill in the information from the decal on the dock leveler to this area. This will greatly reduce the possibility of improper parts being shipped to you.

NORDOCK®	
DESCRIPTION	XX XX XX000 LBS
SERIAL #:	XXXX
866-885-4276 ~ WWW.NORDOCKINC.COM	
MADE IN CANADA	

Copyright

This manual is copyright to Nordock Incorporated. All information, text, drawings, and technical data contained herein are for reference only. No part of this manual may be copied, altered, or stored on electronic media, and cannot be revealed to others for the purpose of competition.

Warranty

Nordock Inc. expressly warrants that its Model CT , CONSTRUCTOR™ Series hydraulic dock leveler shall remain free of defects in material and workmanship under normal use for a period of one-year from the date of delivery to the purchaser. The purchaser must maintain and operate the product in accordance with proper procedures. In the event the product proves defective in material or workmanship, Nordock Inc. will either:

1. Replace the product or the defective portion thereof without charge to the purchaser; or,
2. Alter or repair the product on site or elsewhere, as Nordock Inc. may deem advisable, without charge to the purchaser.

The warranty stated herein is that offered by Nordock Inc. and expressly disclaims all implied warranties including those of merchantability and fitness. This warranty does not cover any failure caused by improper installation, misapplication, overloading, abuse, negligence, or failure to maintain and protect the equipment from vehicle impact. Nordock Inc. or its representative assume no responsibility or liability for any incidental or consequential damages of any kind including loss of use of any equipment, damage or failure resulting from the use of unauthorized replacement parts or equipment modification, or damages resulting from the misuse of the equipment.

Nordock Inc. warranties extend only to the product itself. Nordock Inc. disclaims all liability of any kind arising out of the workmanship, methods and materials used by the installer or premature product wear, product failure, property damage or bodily injury arising from improper installation.

These warranties as stated herein are the exclusive remedies for all claims.



Safety



WARNING

The operators of this unit must read these safety practices before installing, operating or servicing the dock leveler. Failure to follow these safety practices may result in bodily injury, property damage or death.

Read and follow the operating instructions contained in this manual before operating the dock leveler. If you do not understand the instructions, contact your supervisor for explanation and instruction on the safe operation of this unit. The following guidelines are to be used in conjunction with all laws, governances and codes in effect where the dock leveler is installed.

1. Inspect the dock leveler to ensure that all parts are undamaged and in good working order. If the dock leveler does not appear to function properly, or if it looks damaged, **DO NOT USE THE DOCK LEVELER**. Section off the dock area, and notify your supervisor and safety representative.
2. Be sure that the tires of the truck are properly chocked, or that the truck is properly locked in place by a functioning restraining device before loading or unloading.
3. Do not stand on the dock leveler when it is in motion. Stand on the floor behind the hinge as the deck rises. Ensure no one is near the lip, as it will extend as the deck lowers, and will fold quickly.
4. Do not operate the dock leveler with equipment, material, or people on the ramp or lip. **Never use a fork truck or any type of material handling equipment to lower the ramp.**
5. Keep hands and feet clear of hinges at all times. Do not attempt to raise the ramp or lip manually. If the dock leveler fails to operate using the procedures contained in this manual, do not use the dock leveler. Report it immediately to your supervisor and safety representative. Contact Nordock Inc. or an authorized service representative for service.
6. Whenever any maintenance or repair is to be performed on the dock leveler, barricade the area around the deck, and place clear signage on the perimeter that the dock is not to be operated.
7. Use extreme caution when installing the maintenance/support stand. Stay clear of the dock until it has risen fully. **Do not stand under the dock after the stand has been removed.** The lip may fold rapidly, striking the worker.
8. Be sure both lip and deck maintenance support stands are in place before entering the dock leveler pit area. See also Maintenance Procedure next page.
9. Ensure the dock leveler is clear of all material, equipment, or people before the chocks are removed, or the truck is released from the restraint.

10. After loading or unloading, make sure the dock has been returned to its level, stored position.

If you have any questions, contact your supervisor or your local Nordock Inc. representative.

Maintenance Procedure

WARNING

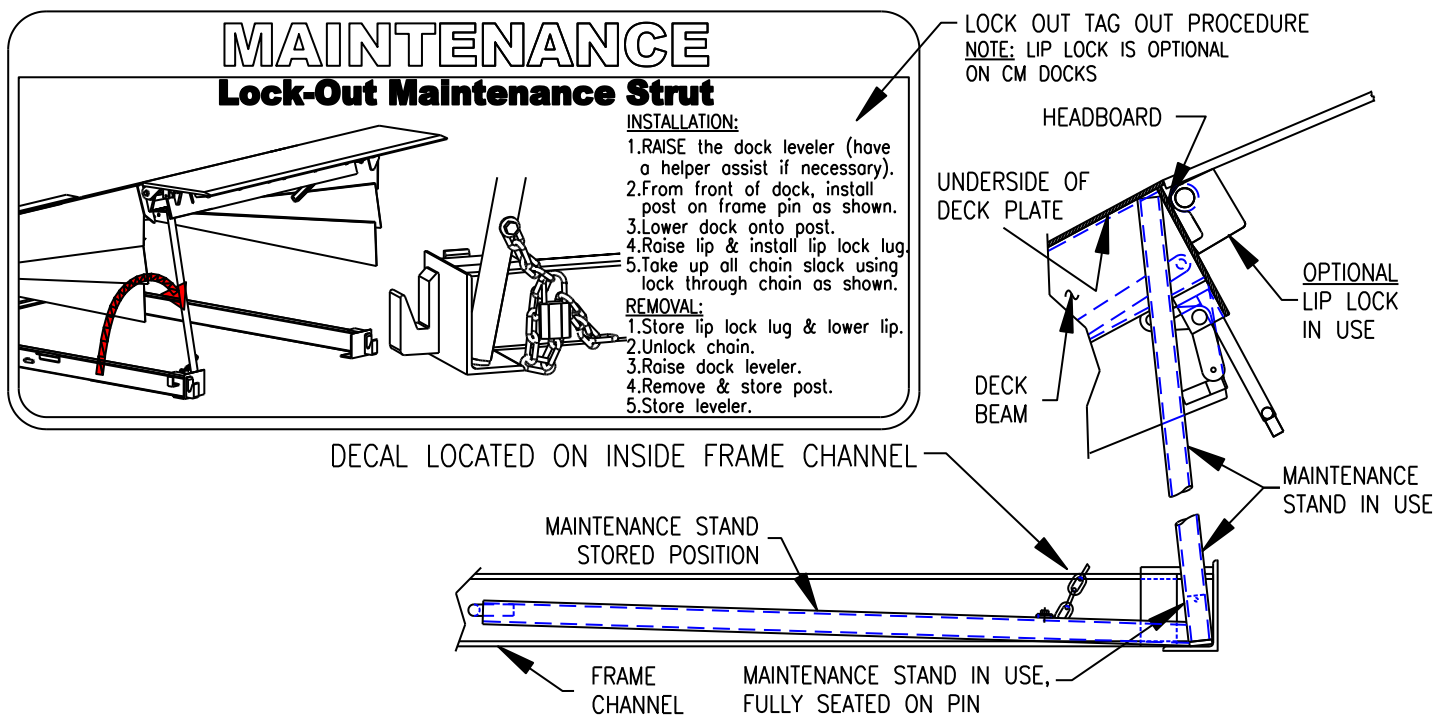
USE EXTREME CAUTION WHEN INSTALLING THE MAINTENANCE STAND

ONLY USE THE PIN PROVIDED TO PROPERLY LOCATE THE MAINTENANCE STAND. SUPPORTING THE LEVELER AT ANY OTHER LOCATION CAN RESULT IN SERIOUS BODILY HARM AND EQUIPMENT DAMAGE.

BE SURE BOTH LIP AND DECK MAINTENANCE SUPPORTS ARE IN PLACE BEFORE ENTERING THE DOCK LEVELER PIT AREA.

Before operating or maintaining the dock leveler, read and follow the practices in the Safety Section and all warnings contained in this manual. Failure to follow the guidelines in this manual and those in effect in the workplace can result in serious bodily harm and equipment damage.

1. Raise the dock to its highest position.
2. Raise the lip and use the lip lock to hold the lip in the extended position.
3. Remove the maintenance stand, located on the frame lower outside left side and position one end onto the adjacent pin (on the frame). The stand will slope toward the rear of the dock, but should be kept vertical left or right.

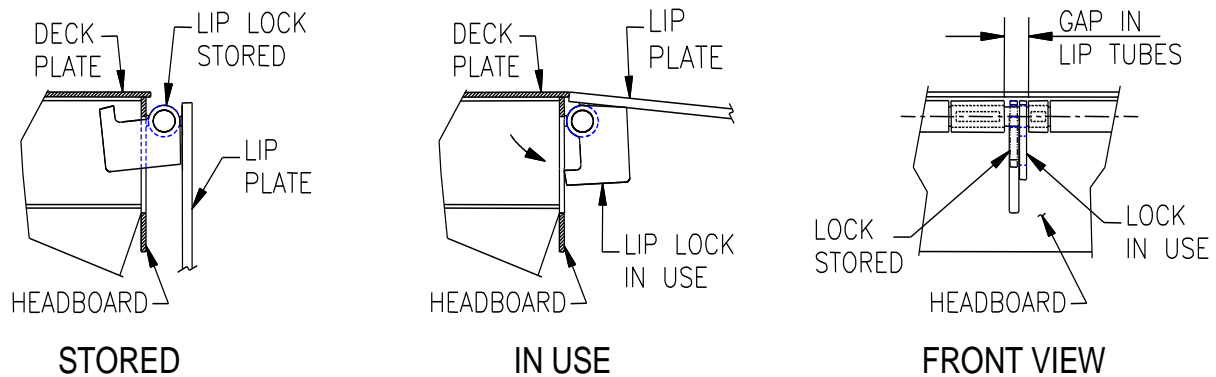


4. Lower the dock onto the stand, making sure the stand supports the deck plate and headboard between the deck beams, as shown. DO NOT support the dock from the bottom of the deck beam.
5. After completing work on the dock, unlock and lower the lip. Remove the maintenance stand and return to its stored position. Do not stand under the dock after the support has been removed.

Optional Lip Lock

1. Raise the dock leveler lip and rotate the lip maintenance lock out from the stored position.
2. Slide the lock to the right so that the bottom tab contacts the steel of the headboard and lower the lip onto the lock.

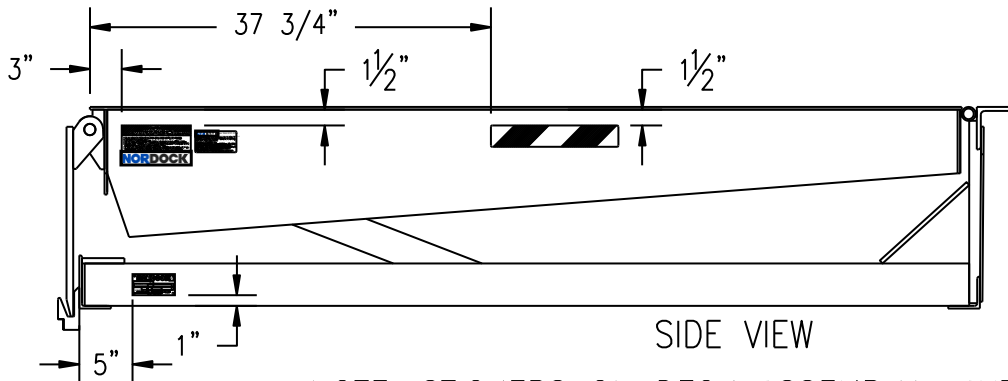
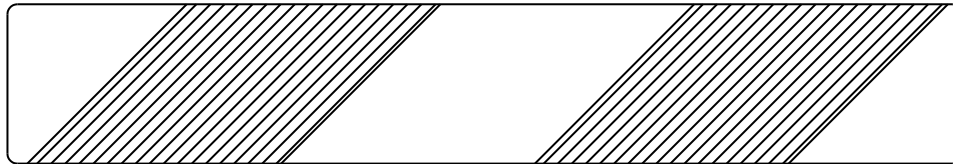
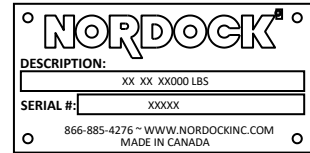
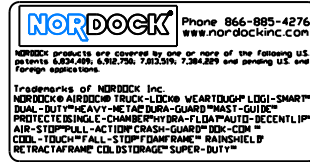
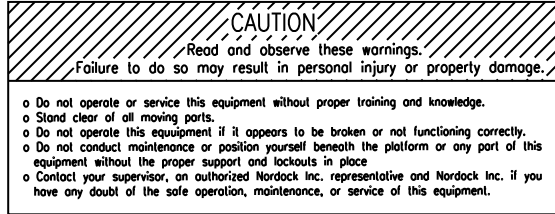
LIP LOCK POSITIONS:



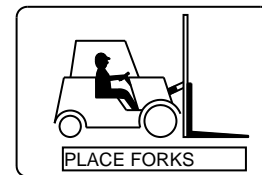
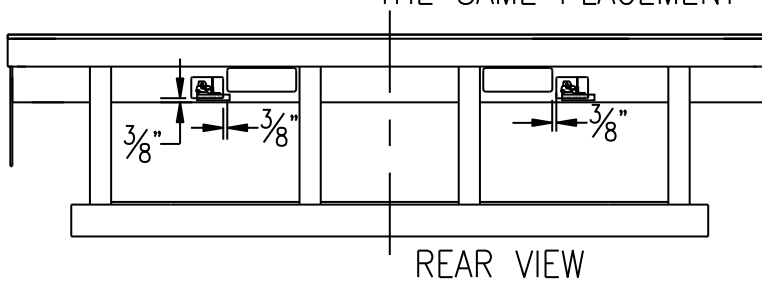
3. To return the lock to the stored position, lift the lip, slide the lock plate to the left and rotate it back into the storage slot.

Labels

The labels and decals on the dock leveler must be kept in clean, legible condition at all times. The following shows the decals and their placement on the dock leveler. Please check their condition on a daily basis, and replace them immediately if they become unreadable.



NOTE: STICKERS ON DECK ASSEMBLY HAVE THE SAME PLACEMENT ON BOTH SIDES



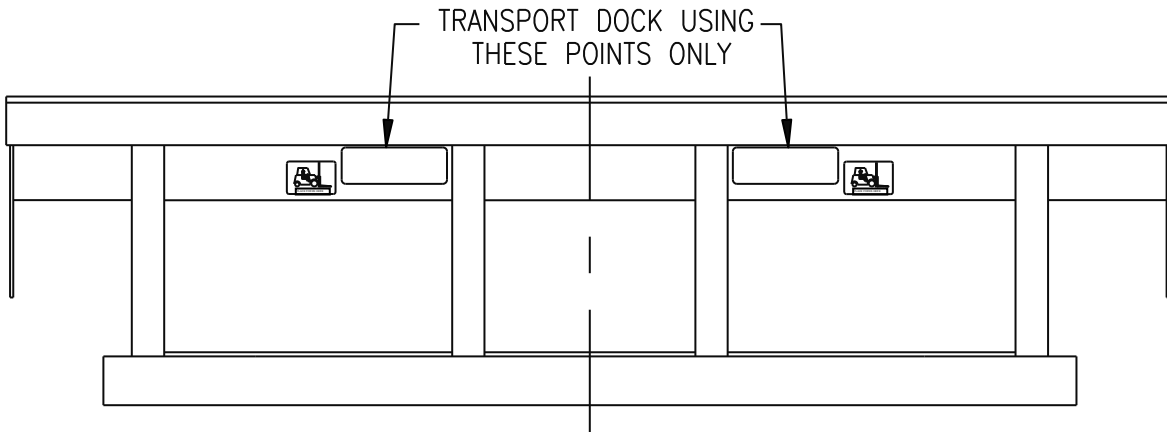
Installation

Pit Check

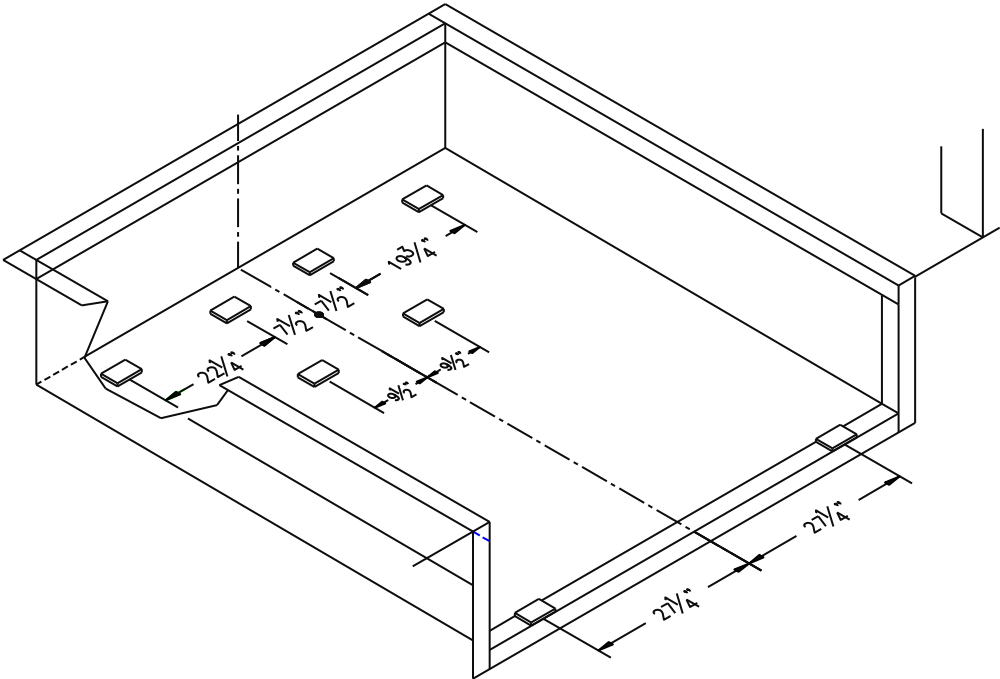
Check the entire pit area for proper construction according to the certified pit drawings. Ensure the pit walls are square and plumb. If this is a replacement, ensure the steel sections are in good, weldable condition. Nordock Inc. will assume no liability or warranty for damage caused by poor pit conditions.

Dock Installation

Note: When moving the dock leveler in preparation to installation, it is crucial that the unit be moved only using the fork pockets at the rear of the frame.

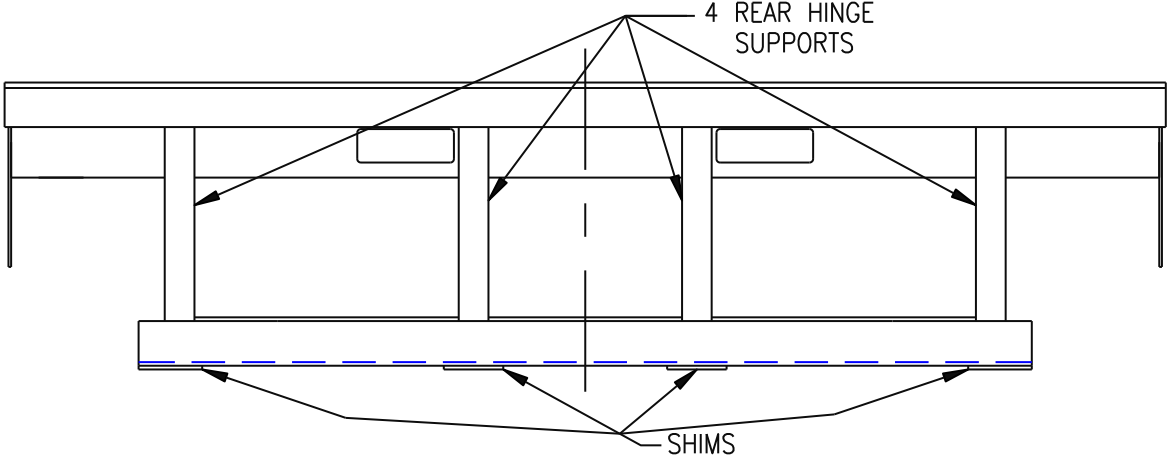
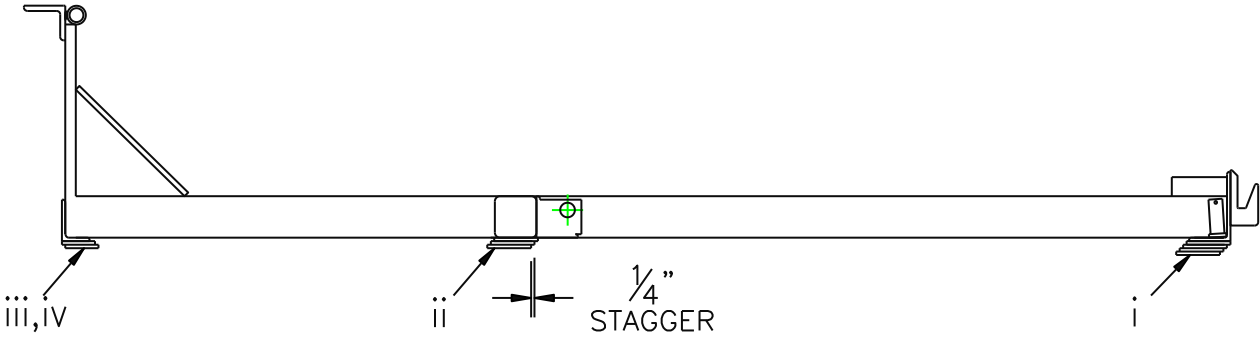


1. Shims may be placed in the pit prior to the installation of the dock. Make sure shim heights all equal the same depth from the edge of the pit area. For best weld, stagger shims at least 1/4" inch. At this time, tack-weld the shims only. See below for correct placement of shims.



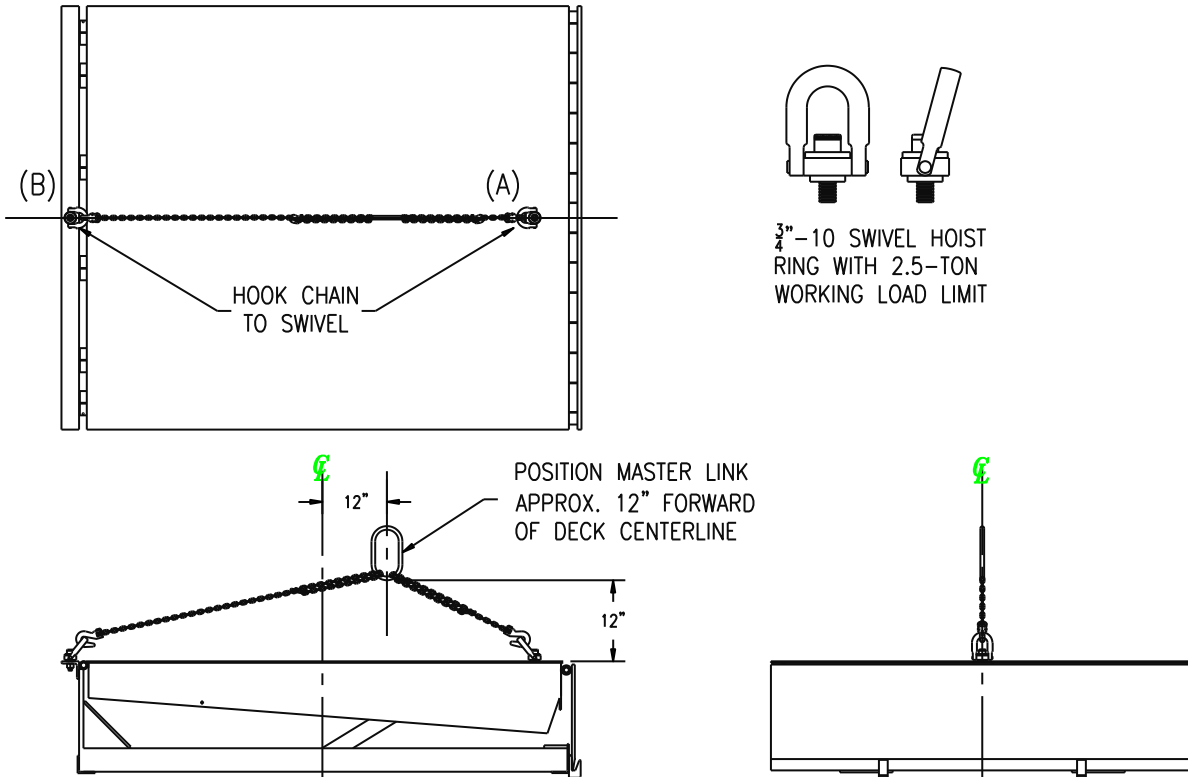
Shims must be placed in the following eight areas:

- i. Under both frame rails directly behind the lip keeper lugs. (2 places)
- ii. Under the cross tube where the lift arm mounts to the frame. (2 places)
- iii. Under frame angle at the uprights connecting to the hinge angle. (4 places)



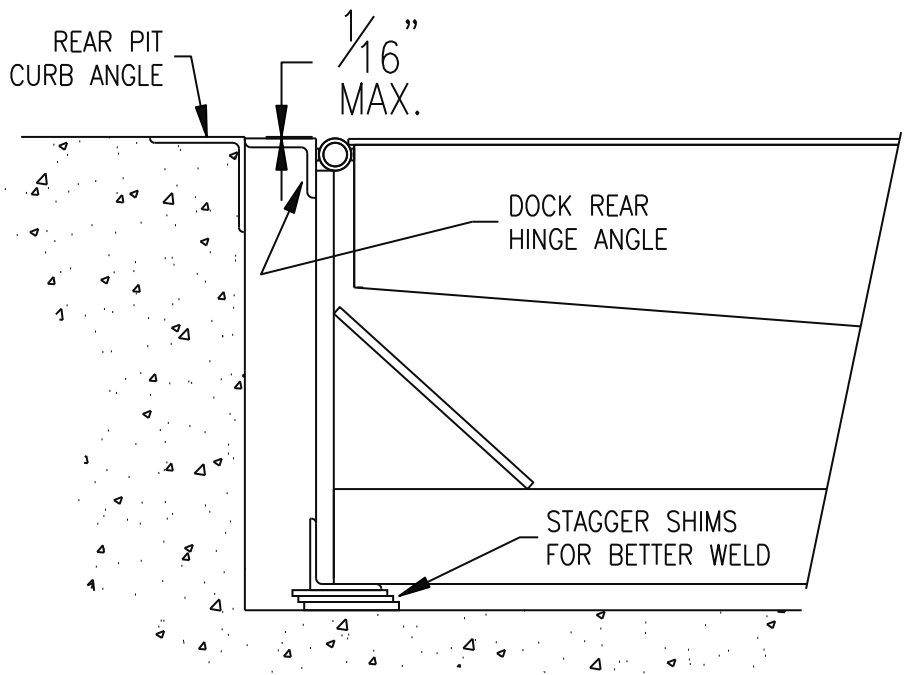
- Attach each swivel hoist ring, one at the front of dock leveler (A) and the other to the rear of the dock leveler (B) in the 3/4"-10 threaded holes. All chains must be minimum grade 80 and chain hooks have a minimum 1-ton capacity. An endless master link should also be used to assist in the levelling of the dock leveler. Two chains must be used; one hooked at the center of the hinge angle and one hooked to the center of the deck plate.

Attach the chains so that the master link is approximately 12" forward of the center of the deck, and centered along the width.



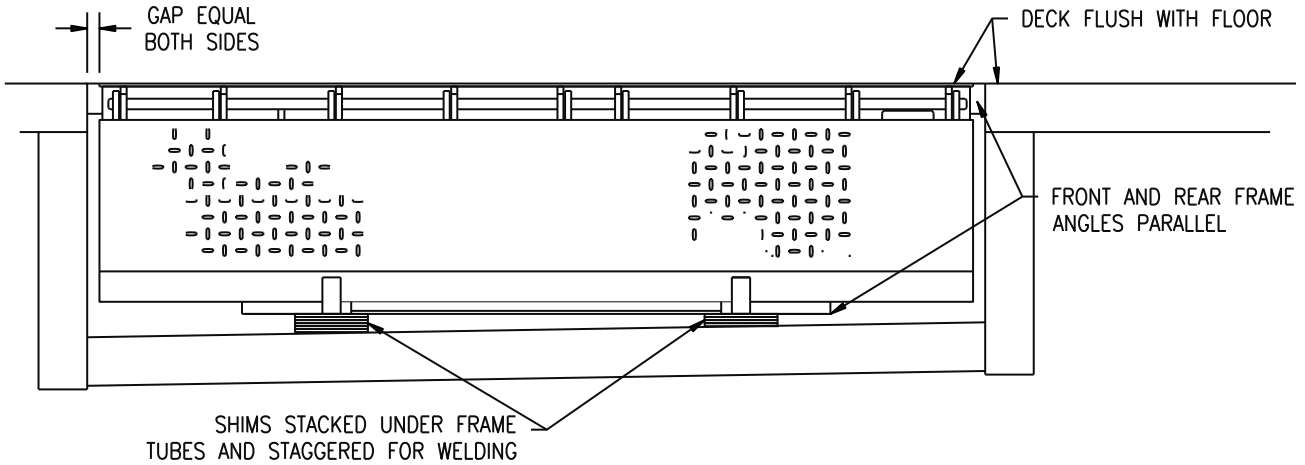
- Lift the deck approximately 6" and check that it is level. Adjust chains accordingly if required. Do not attempt to install the dock if it is not level. Damage to the unit or personal injury may result.

- Move dock so that the rear hinge angle fits flush and tight to pit curb angle and is centered between side pit curb angles.

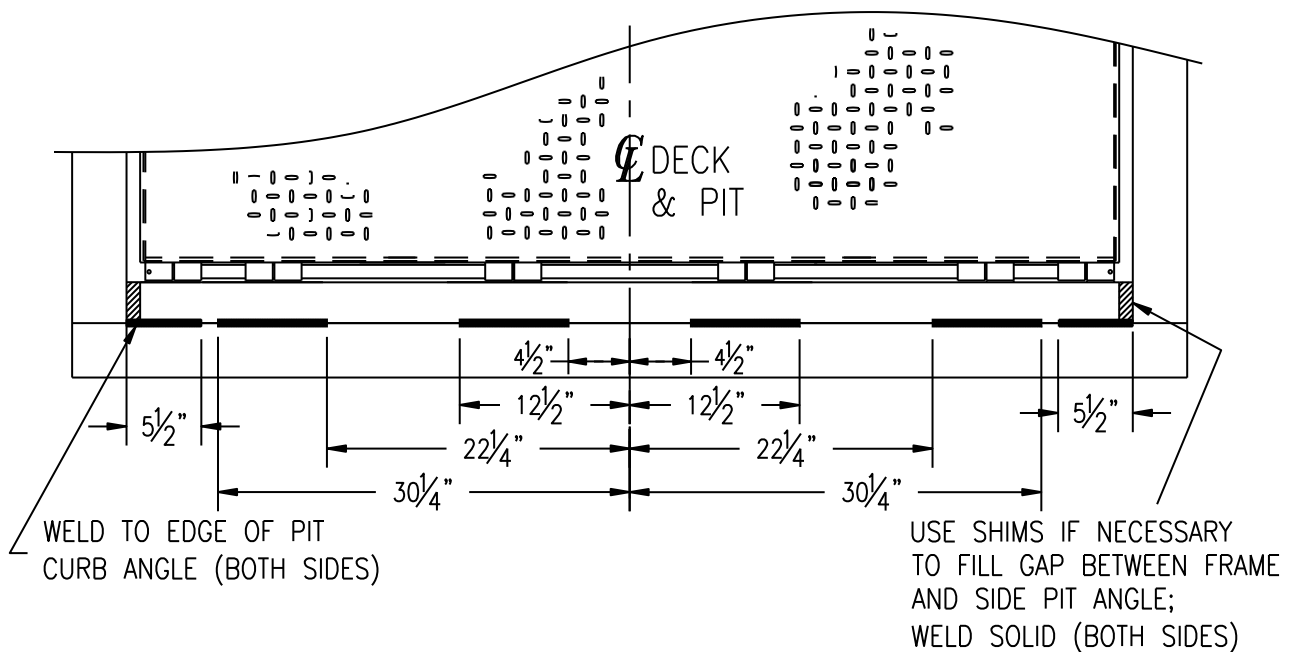


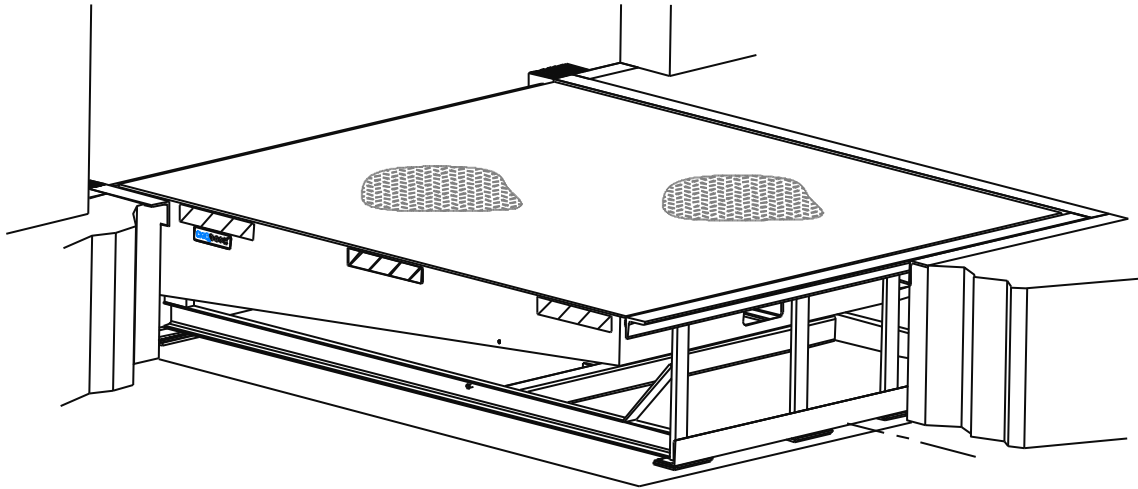
5. Remove the transport cables and raise the dock leveler. Install the maintenance supports and check the position of the shims. Re-position if necessary. There should be no more than 1/16" in height difference at any point between the pit curb angle and the dock leveler. Tack-weld the hinge angle to the pit curb angle.
6. Remove the maintenance support and lower the dock to its stored position. Check that the dock is still squarely positioned and level with the pit sides. Add or remove shims as necessary.

PROPER INSTALLATION



7. Raise the deck and re-install the maintenance support. Weld the shims solidly together, and weld the shims to both the frame and the front angle.
8. Weld the rear hinge angle to the rear and side pit curb angles as shown below.



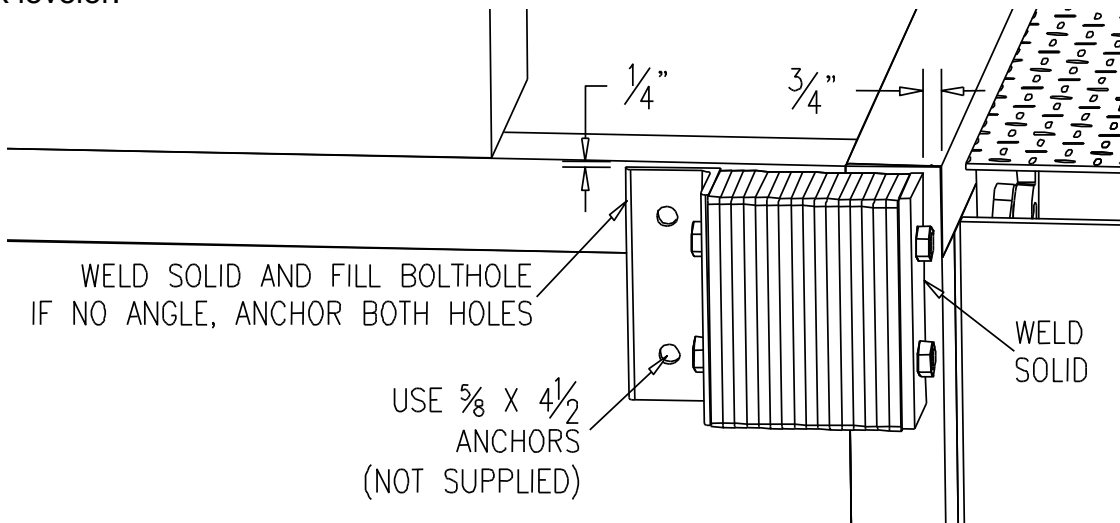


Correct installation will ensure consistent, efficient operation for many years to come.

Note: It is the installer's responsibility to complete any paint touch-up and dock area clean up that may be required.

Bumper Installation:

Bumpers should be installed as follows to prevent damage from trucks backing into the dock leveler.



Install bumper so that it is 1/4" below floor level for proper securing, and 3/4" away from the edge of the pit so that the heads of the bolts will clear the lip as it passes the bumper.

Weld the bumper wherever possible to the pit curb angle, and use 5/8" X 4 1/2" wedge anchors (by others) in the angle holes.

Operation



WARNING

Before operating or maintaining the dock leveler, read and follow the safety practices contained in this manual. Failure to follow the guidelines in this manual and those in effect in the workplace can result in serious bodily harm and equipment damage.

Standard Operation

1. Pull and Hold the release handle located at the deck hinge until the deck reaches its highest point, then release handle.
2. Walk out onto the ramp. The deck will begin to lower under your weight, and the lip will begin to extend. Walk to approximately one foot from the outside edge of the deck. **Do not walk on the lip.**
3. Proceed with loading or unloading.
4. To return the dock to the stored position, place one foot on the floor and the other on the dock. Pull the release handle until the lip clears the truck bed using your weight to slow the deck's ascent. Release the handle before it reaches the raised position.
5. Walk out onto the ramp slowly to lower the platform to floor level. Ensure the lip is stored in its keepers.
For docks with the optional yielding lip and legs, make sure the lip has properly folded, 90° to the deck.

Below Dock End Loading

To lower the ramp without extending the lip for loading or unloading below dock level, substitute item 1 in the preceding instructions with the following:

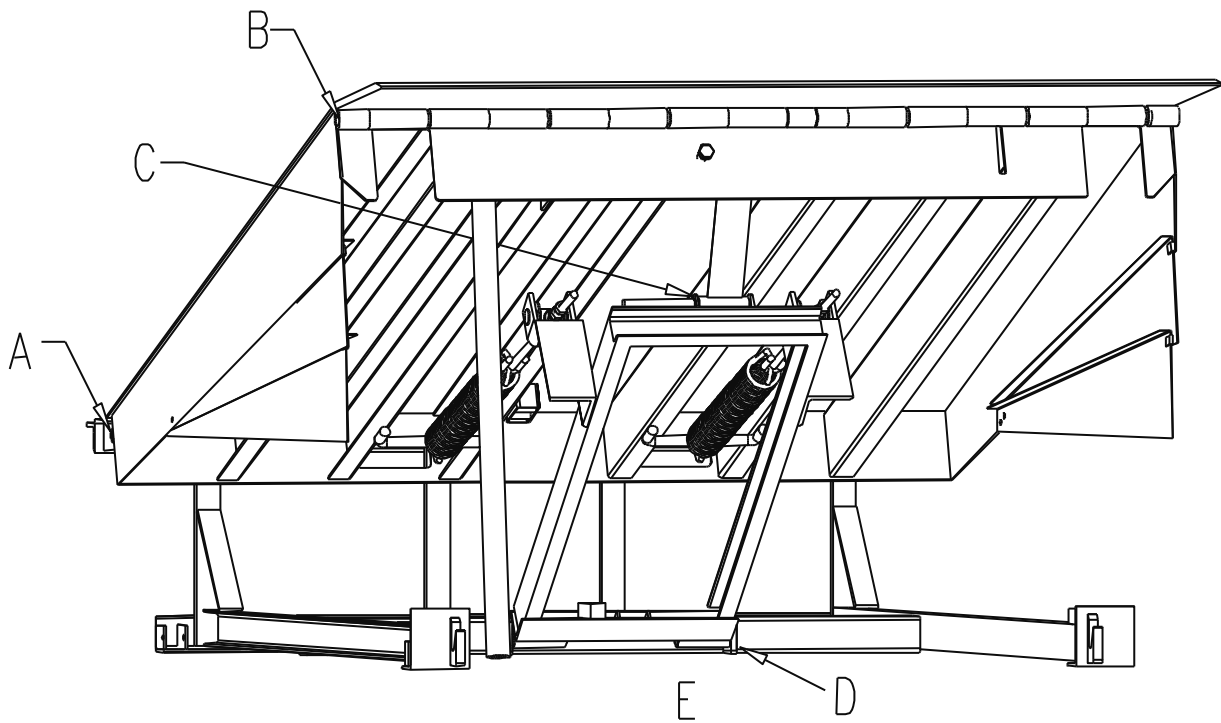
- 1a. Pull the release handle until the deck rises 4-6" above floor level.
- 1b. Move along side of the dock and pull the front lip extend handle to allow the deck to lower directly onto the frame stops.

Maintenance and Lubrication

 **WARNING**

Before operating or maintaining the dock leveler, read and follow the safety practices contained in this manual. Failure to follow the guidelines in this manual and those in effect in the workplace can result in serious bodily harm and equipment damage.

Note: Use only the lubricant grades specified in this manual. Failure to use the materials listed may lead to premature failure, and will void any warranty claims for the dock leveler.



Item	Lubrication	Adjustment	Cleaning
- A - Dock Hinge	Every 90 days Using light oil	None	Remove debris as required
- B - Lip Hinge	Every 90 days Using light oil	None	Remove debris as required
- C - Deck Float Assembly	Every 90 days Using grease	None	Remove debris as required
-D- Lift Arm Assembly	Every 90 Days using light oil	None	Remove debris as required
-E- Pit Area	None	None	Every 90 days or as required to remove debris

Acceptable Lubricants and Oils

Grease

Grease used for hinges must meet a minimum EP-2 grade. E.G.:

CHEVRON DURA-LITH EP-2

Light Oil

Light oils used should have good penetration and adhesion qualities.

Spring Adjustment



WARNING

Before operating or maintaining the dock leveler, read and follow the safety practices contained in this manual. Failure to follow the guidelines in this manual and those in effect in the workplace can result in serious bodily harm and equipment damage.

If the dock fails to 'raise' fully and engage the lip extend mechanism, the spring tension may require adjustment.

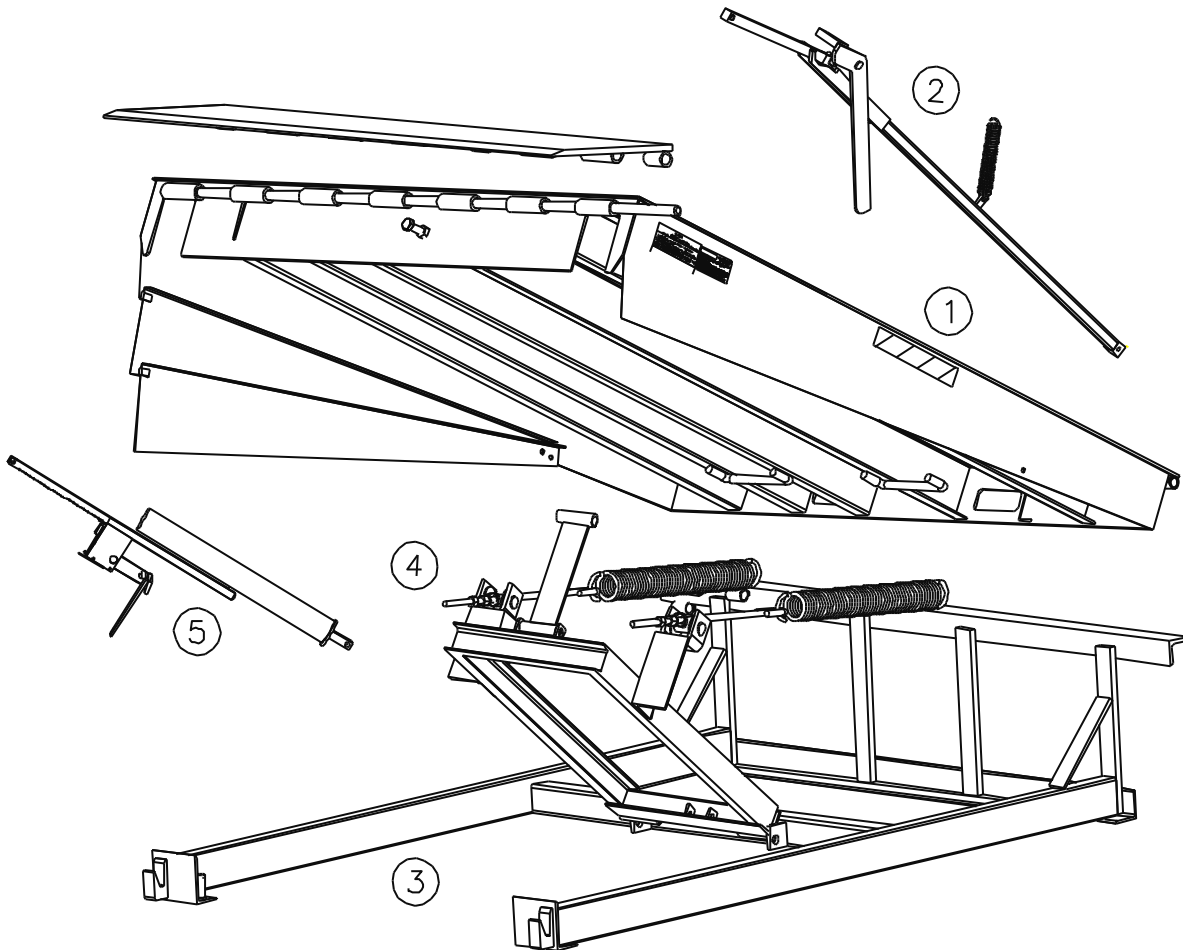
1. Raise the dock and install the maintenance stand as described in the safety section.
2. Turn each adjuster nut clockwise 2 full turns. Do not adjust only one spring.
3. Remove maintenance stand and test the dock from the parked (level) position. Repeat steps 1 and 2 until dock rises fully and lip engages.

Note: It is important that the lip extend mechanism engages fully with the lip extension arm. An additional 2 turns of both adjusters after the lip engages will ensure consistent lip activation.

Do not over tighten springs. Adjust only until dock raises to enough to correctly engage the lip extend mechanism. Over tightening the springs may cause damage to the adjusters, over-stretch the springs, or make the dock difficult to lower.

If replacement springs are required, note that double springs (larger diameter wire) are always mounted closest to the center of the dock.

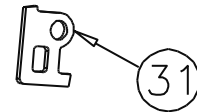
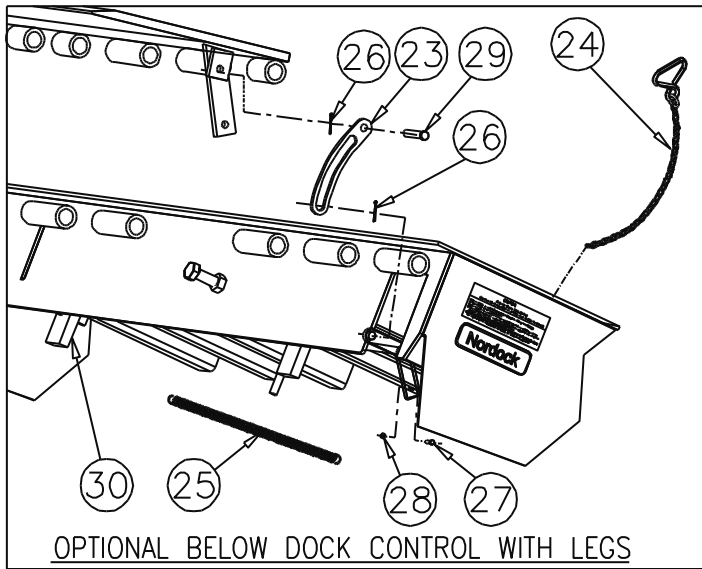
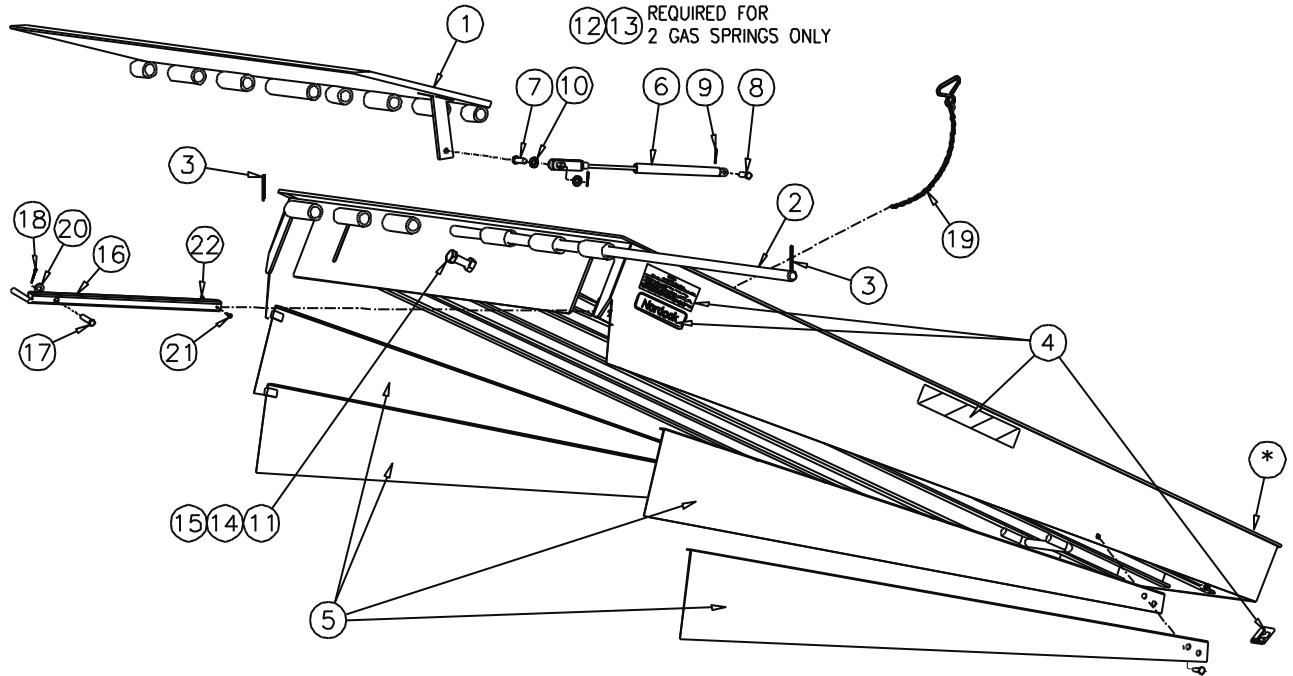
Parts and Service Tables



Section #	Description
1	Deck and Lip Assembly
2	Lip Extend Assembly
3	Frame Assembly
4	Deck Lift Arm and Float Assembly
5	Hold Down Assembly

Note: Not all parts and weldments are noted in this manual. Only those that are serviceable and/or replaceable will be listed. For additional information on those parts not included in this manual, please contact Nordock. Remember to make note of the model and serial number of the unit for accurate parts and service.

Section 1 – Deck and Lip Assembly



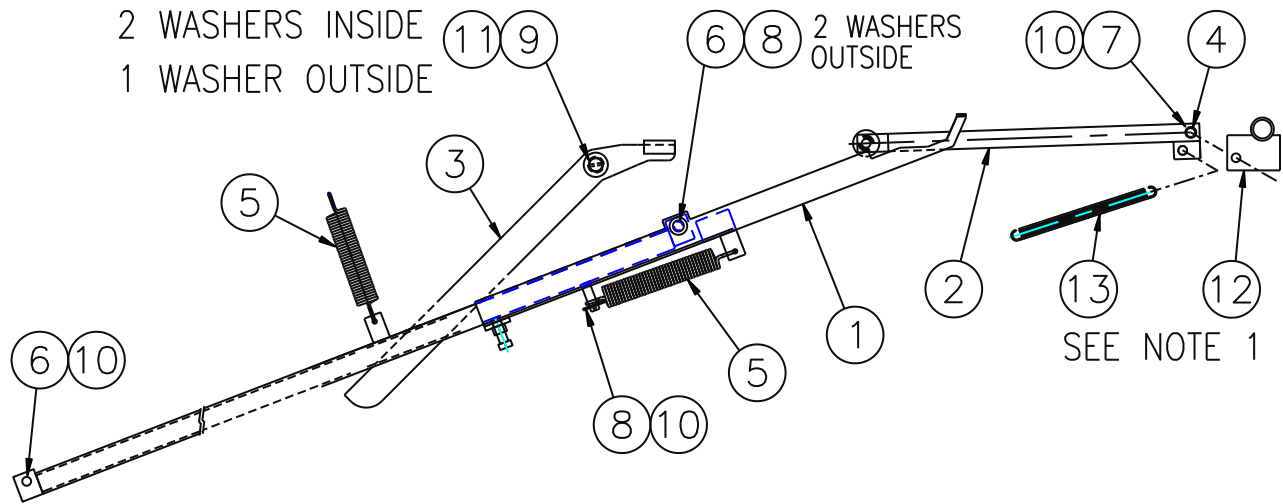
OPTIONAL LIP LOCK

Item	Qty.	Description / Model						Note	
1	1	Lip Weldment							
		Capacity	Length	P/N					
				6'	6.5'	7'	7'T		70"
		30K	16"	42-2339	42-2392	42-2357	42-2342		42-2368
			18"	42-2340	42-2393	42-2358	42-2343		42-2369
			20"	42-2341	42-2394	42-2359	42-2356		42-2370
		35K	16"	42-2344	42-2395	42-2347	42-2360		
			18"	42-2345	42-2396	42-2348	42-2361		
			20"	42-2346	42-2397	42-2349	42-2362		
		40-45K	16"	42-2350		42-2353	42-2363		42-2285
			18"	42-2351		42-2354	42-2364		42-2286
			20"	42-2352		42-2355	42-2365		42-2287

Item	Qty.	Description / Model	P/N	Note	
2	1	Lip Hinge Rod	6' Wide Dock	43-1382	
			6.5' Wide Dock	43-1383	
			7' Wide Dock	43-1384	
			70" Wide Dock	43-1385	
3	2	Spring Pin, 1/4" x 1 3/4"	13-0555		
4	1	Dock Leveler Decal Kit	42-0392	1	
5	1	Telescoping Side Skirt Kit (optional, if equipped)	6' Long Docks	42-0393	
			8' Long Docks	42-0394	
Gas Spring Components (Qty. as required, when equipped):					
6	A/R	Gas Spring – Lip Extend (Quantity As Required)	42-1568		
		Gas Spring c/w Clevis End (Pt11)			
7	1	Clevis Pin - Gas Spring to Lip	13-2111		
		For one gas spring - Clevis Pin, 1/2" x 1 1/4" For two gas springs - Clevis Pin, 1/2" x 2 1/4"			
8	1	Pin - Gas Spring to Deck	13-0500		
		For one gas spring - Clevis Pin, 3/8" x 1 5/8" For two gas springs – Bolt, Hex, 5/16" x 3 1/4"			
9	2	Cotter Pin, 1/8" x 1	13-0171		
10	2	Washer, 3/8" SAE Flat	13-0203		
11	1	5/8" Dia. Nut, Bolt x 4" Long	13-0302		
12	1	Nut, Nylock, 5/16", plated (req'd two gas springs only)	13-0846		
13	2	Washer, Flat, 3/8", plated (req'd two gas springs only)	13-0203		
14	1	Nut, Hex, 5/8", plated	13-0289		
15	1	Lock Washer, 5/8"	13-0657		
*	1	Rear Cup pulley & hardware - see Hold Down Section, Items 25-27			
Below Dock Control					
16	1	Lip Extend Bracket – Handle to Lip	42-2016		
17	1	Clevis Pin – Lip Extend, 1/2" x 2 1/4"	13-0288		
18	1	Cotter Pin, 1/8" x 1"	13-0171		
19	1	Lip Extend Chain – Deck to Handle (9 1/2")	42-1415		
20	1	Washer, 1/2", plated	13-0267		
21	1	Screw, 10-24 x 1" long, plated	13-0841		
22	1	Nut, Nylock, 10-24 plated	13-1858		
Optional Below Dock Control with Legs					
23	1	End Load Linkage Arm – Handle to Lip	43-0194		
24	1	Below Dock Release Chain Deck to Handle (15")	42-0299		
25	1	Below Dock Return Spring	13-0294		
26	2	Cotter Pin, 1/8" x 1	13-0171		
27	1	Screw, #10-24 x 3/4"	13-0787		
28	1	Nut, Nylock #10-24	13-0582		
29	1	Clevis Pin, 1/2" x 1"	13-0805		
30	1	Leg Weldment, 19" Frame	42-2400		
Optional Lip Maintenance Lock					
31	1	Lip Lock	43-1062		

Note 1: For correct decal placement, see safety section.

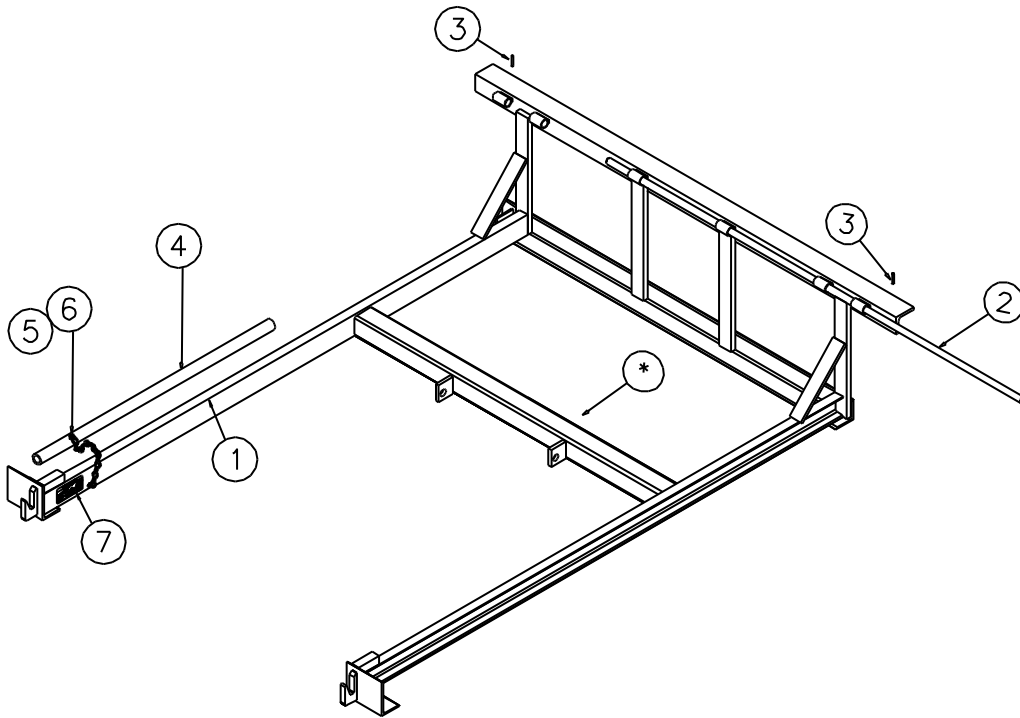
Section 2 – Lip Extend Assembly



Item	Qty.	Description / Model	P/N	Note	
1	1	Rear Push- 6' Long Dock 8' Long Dock	42-2217 42-2219		
2	1	Front Push-bar Assembly, 17 3/4" c to c	42-2410		
3	1	Kick-out Lever	42-2182		
4	1	Bushing, Sleeve, 1/2" ID x 5/8" OD x 1" Long (c/w Item 2)	13-0434		
5	2	Spring, 1 1/4" OD x 7 1/2" long	13-1955	2	
6	2	Clevis Pin – 1/2" x 2 1/4", Plated	13-0288	2	
7	1	Clevis Pin – 1/2" x 2"	13-0398		
8	3	Flat Washer, 1/2", Plated	13-0267	2	
9	3	Flat Washer, 3/4", Plated	13-0968		
10	4	Cotter Pin, 1/8" x 1" long	13-0171	2	
11	1	Cotter Pin, 1/8" x 1 1/2" long	13-0397		
12	1	Cam Weldment 25-30K 35-45K	42-2417 42-2411		
13	1	Spring, 5/8" OD x 8 1/2" long	13-0294		
		Auto Descent Lip Extend Assembly (Items 1-11)	6' Long Dock 8' Long Dock'	42-3826 42-3827	1

Note 1 - Item 11 Cam and Item 12 cam spring to be ordered separately.

Section 3 – Frame Assembly



Item	Qty.	Description / Model						Note		
1	1	Frame Weldment						1,2		
		Capacity	Dock Length	Frame Depth	P/N - Dock Width					
					6'	6.5'	7'		70"	
		30-45K	6'	19"	42-2300	42-2303	42-2306		42-2297	
8'	19"		42-2301	42-2304	42-2307	42-2298				
2	1	Rear Hinge Rod				43-0154	43-0155	43-0156	43-0462	
								P/N		
3	2	Spring Pin, 1/4" x 2"						13-0555		
4	1	Maintenance / Support Stand			Standard Dock (40")		43-0262			
5	1	Washer, 1/4" Fender, Plated						13-0271		
6	1	Screw, 1/4" -14 x 1, Tek, Hex Head, plated						13-0273		
7	1	Decal, Dock leveler, Lock-Out Tag-Out						43-1287		
*		8' long frame pulley & hardware - see Hold Down Section, Items 25-27								

Note 1 – CM docks use a spacer kit for a 23" frame depth.

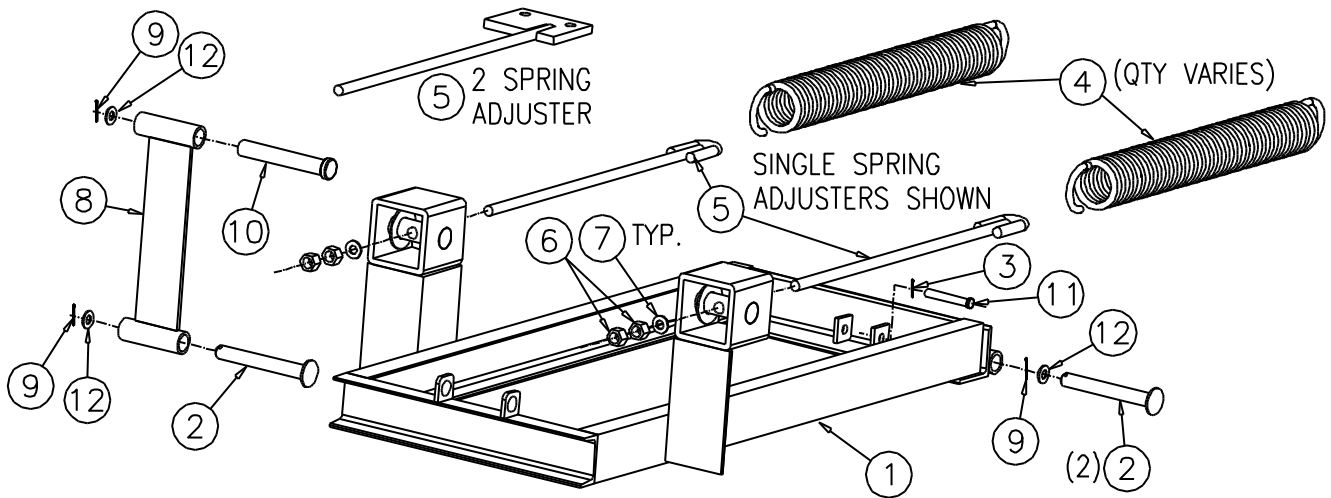
Note 2 - The standard Rear Frame angle width is 3". Widths may vary to suit pit length. Please consult factory when ordering replacement frames.

Section 4 – Optional Equipment

Option	Qty.	Description / Location	P/N	Note
Bumper	2	Standard Bumper, AF410-11	61-0001	1
Weather Seals	6'	Brush Seal and Mounting Extrusion Kit	61-0025	
	8'	Brush Seal and Mounting Extrusion Kit	61-0024	

Note 1 – For custom bumper sizes and applications, please contact your nearest Nordock representative or call 1-866-885-4276.

Section 5 – Deck Lift and Float Assembly

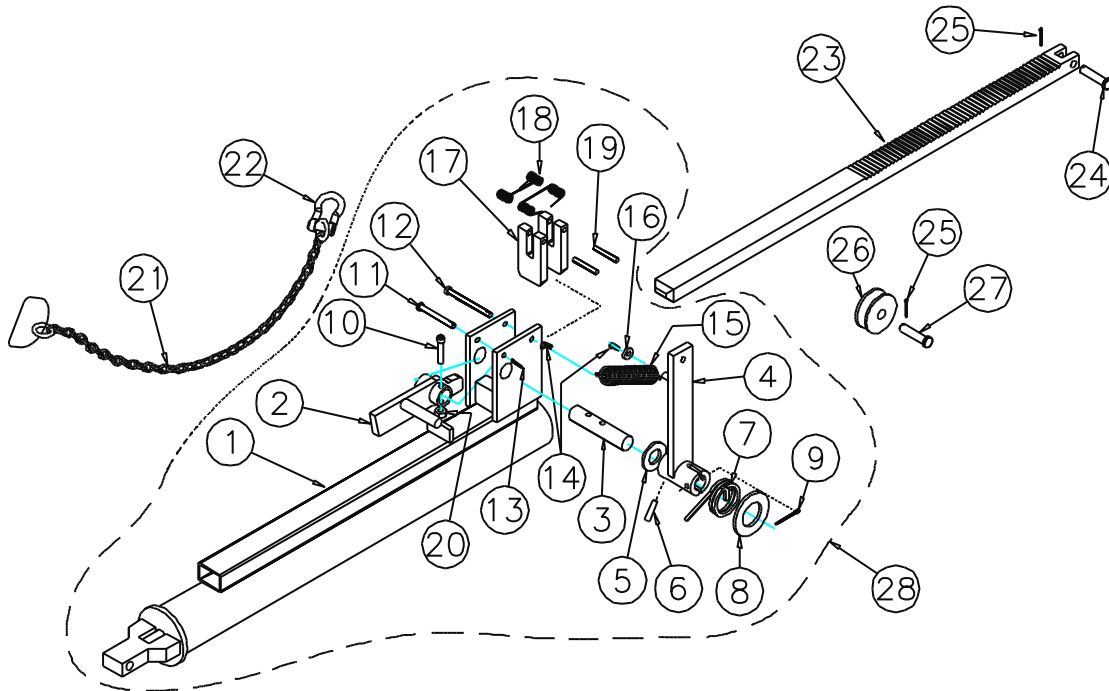


Item	Qty.	Description / Model		P/N	Note	
1	1	Lift Arm Weldment	25-45K	66, 6.56, 76	42-0470	
			25-45K	68, 6.58, 78	42-0423	
2	3	Lift Arm Mount Pin, 7/8" x 5 3/4" long		42-0759		
3	1	Nut, Hex, 3/8" Nylock		13-0397		
4	C/F	Main Lift Spring	Standard Duty (.408" wire)	13-0007	1	
			Heavy Duty (.468" wire)	13-0006	1	
5	C/F	Spring Adjuster	6' Dock length 1 Spring	42-0654		
			8' Dock length 1 Spring	42-0397		
			6' Dock length 2 Springs	42-0656		
			8' Dock length 2 Springs	42-0637		
6	4	Nut, 5/8" - 11		13-0289		
7	2	Washer, 5/8"		13-0952		
8	1	Upper Lift Arm Weldment		42-0933		
9	4	Cotter Pin, 1/4" x 1 3/4"		13-0992		
10	1	Upper Lift Arm Mount Pin, HM, 7/8 x 4 3/4" long		42-0936		
11	1	Bolt, Shoulder, 1/2" x 2", Plated		13-0344		
12	4	Washer, 1 3/8" O.D. x 7/8" I.D.		13-3575		
13	1	Optional Spring Adjuster Tool, not shown		42-1208		

C/F – Consult Factory

Note 1: Lift springs are matched at the factory. Please call your local Nordock dealer or 1-866-885-4276 for replacement springs.

Section 6 – Hold Down Assembly



Item	Qty.	Description / Model	P/N	Note
1	1	Hold Down Weldment	42-0938	
2	1	Pawl Lifter Weldment	42-1350	
3	1	Hold Down Release Handle Pivot Shaft	43-0798	
4	1	Hold Down Release Weldment	42-1351	
5	1	Flat Washer, 3/4" Dia.	13-0649	
6	1	Grooved Pin, 1/4" x 1 1/4"	13-1513	
7	1	Spring, .162" Square Wire	43-0269	
8	1	Washer, 1 1/8" SAE, Plated	13-3700	
9	1	Cotter Pin, 1/4" x 1 3/4"	13-0992	
10	1	Cap Screw, 1/4" x 1 1/2" long	13-1528	
11	1	Clevis Pin, 1/4" x 2 1/4"	13-0521	
12	1	Clevis Pin, Universal, 1/4" x 2 1/2"	13-1525	
13	1	Cotter Pin Clip, 1/16" x 1"	13-0516	
14	2	Hitch Pin Clip	13-1526	
15	1	Spring, .085" Dia. Wire, 3 1/2" Long	13-1524	
16	1	Fender Washer, 1/4"	13-0271	
17	2	Hold Down Pawl	43-0180	
18	2	Pawl Spring	43-0265	
19	2	Pawl Pin	43-0388	
20	1	Nut, 1/4"-20 Plated, Nylock	13-0270	
21	1	Hold Down Release Handle Chain	6' Dock (40") 8' Dock (63")	42-1000 42-1355
22	1	Shackle Anchor, 1/4" Screw Pin	13-0540	
23	1	Ratchet Bar	43-0179	
24	1	Clevis Pin, 3/8" x 1 5/8"	13-0500	
25	2	Cotter Pin, 1/8" x 1"	13-0171	
26	1	Wheel, 2" White Plastic, 8' Frames; All Rear Cup	13-0169	
27	1	Clevis Pin, 3/8" x 1 5/8", 8' Frames; All Rear Cup	13-0500	
28	1	Hold Down Base Assembly, Items 1 to 20	42-0940	