

FLEX-LIP® Series
Hydraulic Dock Leveler
Model "SHLF"
25,000 to 50,000 lbs. Capacity

Operation and Maintenance Manual

This manual applies to dock levelers manufactured on or after
October 2018 with Serial Numbers greater than 44336.

P/N: 49-0265-B

NORDOCK INC.

Website: nordockinc.com ~ Email: sales@nordockinc.com ~ Toll free: 866-885-4276
Nordock Incorporated reserves the right to make changes to specifications without notice or obligation.
Nordock products may be covered by various U.S. and foreign patents or pending applications.

Preface

PLEASE READ AND UNDERSTAND THIS MANUAL COMPLETELY

This manual gives detailed information and instruction on how to operate and maintain your equipment correctly. Failure to do so could result in personal injury, and/or equipment damage. Please consider this manual a permanent part of the unit and keep it with the dock leveler for reference whenever needed.

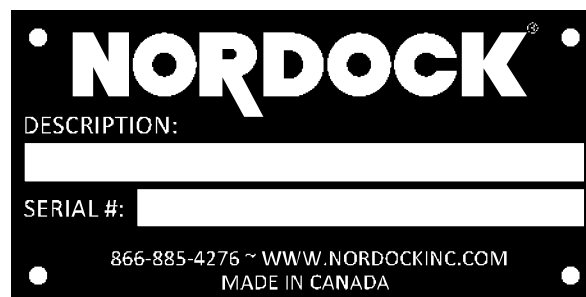
If you have any questions about this manual, the dock leveler, its components, or our products and services, please call us at 1-866-885-4276 and we will be happy to assist you. With proper care and maintenance, this dock leveler is designed to work effectively and efficiently for many years to come.

Problems, Errors and Omissions

This manual has been prepared with the utmost care and attention to detail as to ensure accurate parts and service information should the need arise. Nordock Incorporated believes this manual will provide the operators of this unit all the necessary information required to operate and maintain it for many years. If you believe there is an error, if you have a problem following the guidelines, or if there is information that you feel is missing from this manual, please contact us at the above number so we may attend to the issue immediately.

Dock Identification

It is very important that in order to provide the best possible service from Nordock Inc., please include the model, serial number and capacity of the dock leveler whenever you contact us. Below is the model and serial number nameplate that will be found on the left side frame rail (standing on the dock, facing the lip). Please fill in the information from the decal on the dock leveler to this area. This will greatly reduce the possibility of improper parts being shipped to you.



Copyright

This manual is copyright to Nordock Incorporated. All information, text, drawings, and technical data contained herein are for reference only. No part of this manual may be copied, altered, or stored on electronic media, and cannot be revealed to others for the purpose of competition.

Table of Contents

Preface	i
Problems, Errors and Omissions	i
Dock Identification	i
Copyright	i
Table of Contents.....	2
Warranty.....	3
Safety	4
Operation.....	4
Maintenance Procedure.....	5
Labels.....	6
Installation	7
Pit Check	7
Dock Installation	7
Bumper Install.....	8
Operation	13
Standard (Single Pushbutton) Control Panel.....	13
Below Dock Control	13
Optional (Lip Extend and/or On/Off Switch) Control Panel	13
Below Dock Control	14
Auto Return.....	14
Troubleshooting	15
Motor does not operate when button is pressed.....	15
Motor operates but Dock Leveler does not raise	15
Dock leveler fails to lower	15
Maintenance and Lubrication	16
Acceptable Lubricants and Oils	17
Hydraulic.....	17
Grease	17
Light Oil.....	17
Hydraulic Adjustment.....	17
Parts and Service Tables	18
Section 1 – Deck and Lip Assembly	19
Section 2 – Frame	20
Section 3 – Power Pack and Related Hydraulic Components	21
Section 4 – Hydraulic Cylinders.....	22
Section 5 – Hydraulic Lines and Fittings.....	22
Section 6 – Optional Equipment	23
Section 7 – Control Panels	24
Wiring Diagrams	25

Warranty

Nordock Inc. expressly warrants that Model SHLF FLEX-LIP™ series dock levelers shall remain free of defects in material and workmanship under normal use for a period of one-year from the date of delivery to the purchaser. The purchaser must maintain and operate the product in accordance with proper procedures. In the event the product proves defective in material or workmanship, Nordock Inc. will at its option either:

1. Replace the product or the defective portion thereof without charge to the purchaser; or,
2. Alter or repair the product on site or elsewhere, as Nordock Inc. may deem advisable, without charge to the purchaser.

In addition, the front and rear hinge assemblies are guaranteed, under specified guidelines, for a period of Twenty-Years, and the deck lip and frame for Ten-Years.

The warranty stated herein is that offered by Nordock Inc. and expressly disclaims all implied warranties including those of merchantability and fitness. This warranty does not cover any failure caused by improper installation, misapplication, overloading, abuse, negligence, or failure to maintain and protect the equipment from vehicle impact. Nordock Inc. or its representative assume no responsibility or liability for any incidental or consequential damages of any kind including loss of use of any equipment, damage or failure resulting from the use of unauthorized replacement parts or equipment modification, or damages resulting from the misuse of the equipment.

Nordock Inc. warranties extend only to the product itself. Nordock Inc. disclaims all liability of any kind arising out of the workmanship, methods and materials used by the installer or premature product wear, product failure, property damage or bodily injury arising from improper installation.

These warranties as stated herein are the exclusive remedies for all claims.



Safety



WARNING

The operators of this unit must read these safety practices before installing, operating or servicing the dock leveler.

FAILURE TO FOLLOW THESE SAFETY PRACTICES MAY RESULT IN BODILY INJURY, PROPERTY DAMAGE OR DEATH.

Read and follow the operating instructions contained in this manual before operating the dock leveler. If you do not understand the instructions, contact your supervisor for an explanation on the safe operation of this unit or call Nordock Inc. at 1-866-885-4276. The following guidelines are to be used in conjunction with all laws, governances and codes in effect where the dock leveler is installed.

Operation

1. Inspect the dock leveler both when the truck arrives, and once it has left, to ensure that all parts are undamaged and in good working order. If the dock leveler does not appear to function properly, or if it looks damaged, **DO NOT USE THE DOCK LEVELER**. Disconnect the power supply, lock out the control panel and report it immediately to your supervisor and safety representative.
2. Do not attempt to service trailers that are outside the safe operation service range. Service range varies depending on the combination of dock and lip length. Contact Nordock Inc. or an authorized service representative to determine the correct range for this particular dock leveler.
3. Be sure that the tires of the truck are properly chocked, or that the truck is properly locked in place by a functioning restraining device before loading or unloading.
4. Stay clear of the dock leveler when it is in motion.
5. Do not operate the dock leveler with equipment, material, or people on the ramp or lip, and **NEVER USE A FORK TRUCK OR ANY TYPE OF MATERIAL HANDLING EQUIPMENT TO LOWER THE RAMP**.
6. Keep hands and feet clear of hinges at all times. Do not attempt to raise the ramp or lip manually. If the dock leveler fails to operate using the procedures contained in this manual, do not use the dock leveler. Disconnect the power supply, lock out the control panel and report it immediately to your supervisor and safety representative. Contact Nordock Inc. or an authorized service representative for service.
7. Use extreme caution when installing the Maintenance/Support stand. Stay clear of the dock until it has risen fully. **Do not stand under the dock after the stand has been removed**. The lip may fold rapidly, striking the worker.
8. Make sure the maintenance stand is properly seated on the pin and resting on the inside of the deck plate, not on a beam or other component. Carefully reposition the stand if required. Be sure that both the maintenance / support stand is engaged and the power has been disconnected with the control panel locked out before entering the dock leveler pit area.
9. Any work to be performed on the electrical system must be carried out by a qualified electrician.
10. Any work to be performed on the hydraulic system must be carried out by a qualified hydraulic technician or specialist.
11. Ensure the dock leveler is clear of all material, equipment, or people before the chocks are removed, or the truck is released from the restraint. After loading or unloading, make sure the dock has been returned to its level, stored position.

If you have any questions, contact your supervisor or your local Nordock Inc. representative.

Maintenance Procedure



WARNING

USE EXTREME CAUTION WHEN INSTALLING THE MAINTENANCE STAND.

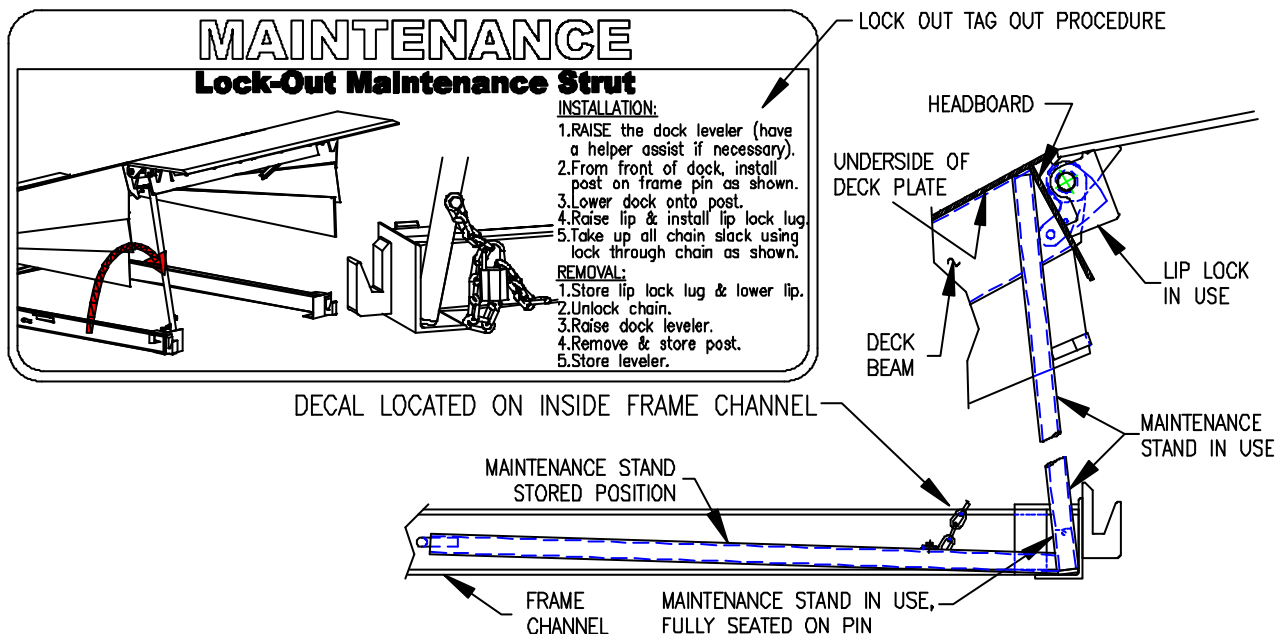
ONLY USE THE PIN PROVIDED TO PROPERLY LOCATE THE MAINTENANCE STAND.

SUPPORTING THE LEVELER AT ANY OTHER LOCATION CAN RESULT IN PERSONAL BODILY INJURY AND/OR EQUIPMENT DAMAGE.

ENSURE THAT THE POWER SUPPLY HAS BEEN LOCKED OUT AND BOTH LIP AND DECK MAINTENANCE SUPPORTS ARE IN PLACE BEFORE ENTERING THE DOCK LEVELER PIT AREA.

Before operating or maintaining the dock leveler, read and follow the safety practices contained in the Safety Section and all warnings contained in this manual. Failure to follow guidelines in this manual and those in effect in the workplace can result in serious personal injury and/or equipment damage.

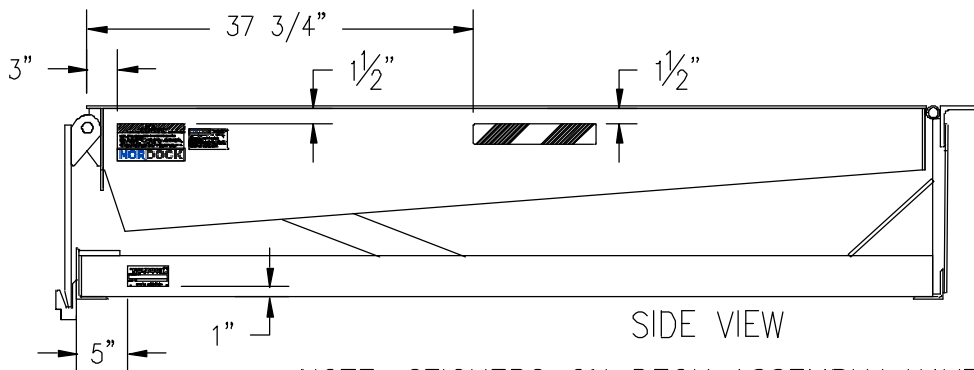
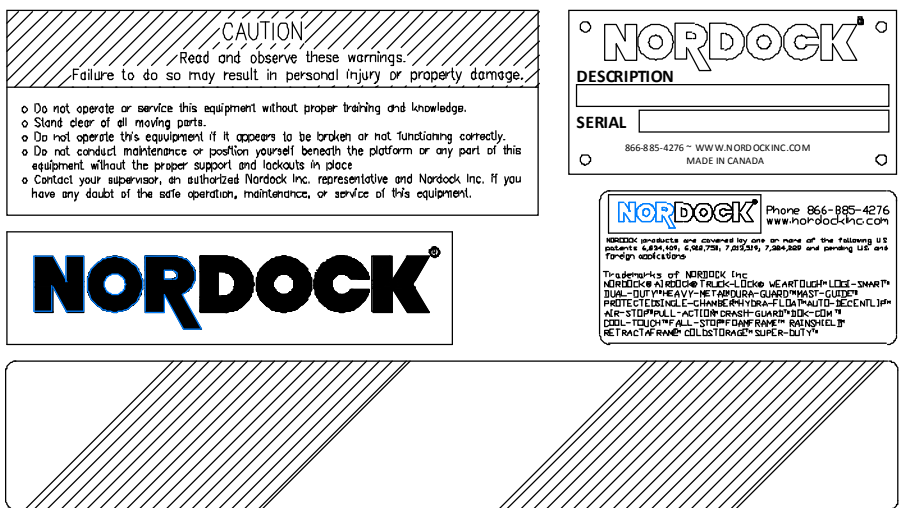
1. Raise the dock to its highest position.
2. Raise the lip and use the lip lock to hold the lip in the extended position. (See image to right.)
3. Remove the maintenance stand, located on the frame lower outside left side and position one end onto the adjacent pin (on the frame). The stand will slope toward the rear of the dock, but should be kept vertical left or right.



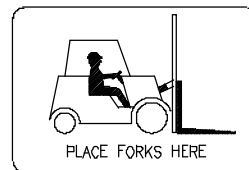
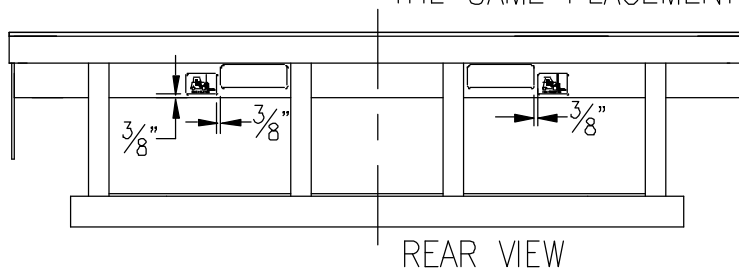
4. Lower the dock onto the stand, making sure the stand supports the deck plate and headboard between the deck beams, as shown. DO NOT support the dock from the bottom of a deck beam or other component.
5. After completing work on the dock, unlock and lower the lip. Remove the maintenance stand and return to its stored position. Do not stand under the dock after the support has been removed.

Labels

The labels and decals on the dock leveler must be kept in clean, legible condition at all times. The following shows the decals and their placement on the dock leveler. Please check their condition on a daily basis, and replace them immediately if they become unreadable.



NOTE: STICKERS ON DECK ASSEMBLY HAVE THE SAME PLACEMENT ON BOTH SIDES



Installation



WARNING

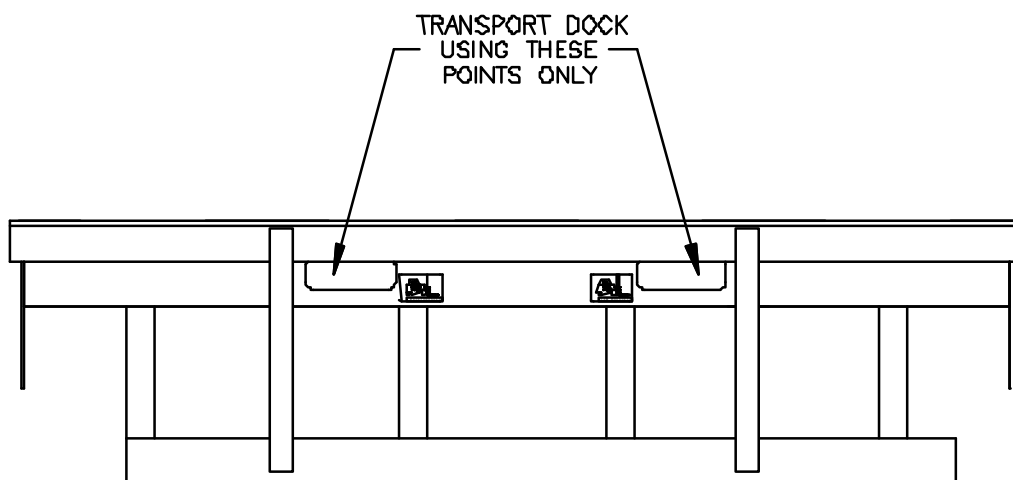
Before operating or maintaining the dock leveler, read and follow the safety practices contained in this manual. Failure to follow the guidelines in this manual and those in effect in the workplace can result in serious bodily harm and equipment damage.

Pit Check

1. Check the entire pit area for proper construction according to the certified pit drawings. Ensure the pit walls are square and plumb. If this is a replacement, ensure the steel sections are in good, weldable condition. Check the electrical service running to the pit and make sure it is the same as the voltage and phase as shown on the wiring diagram in the control panel.
2. Complete any pre-wiring procedures before the dock is placed in the pit. Ensure that any cables, plugs or leads are connected to the dock, and that there are correct corresponding leads, receptacles or device boxes with covers in the pit.
3. Make sure that any conduit and/or junction boxes do not interfere with the frame uprights. See drawing below for best placement.

Dock Installation

Note: When moving the dock leveler in preparation to installation, it is crucial that the unit be moved only using the fork pockets at the rear of the frame.

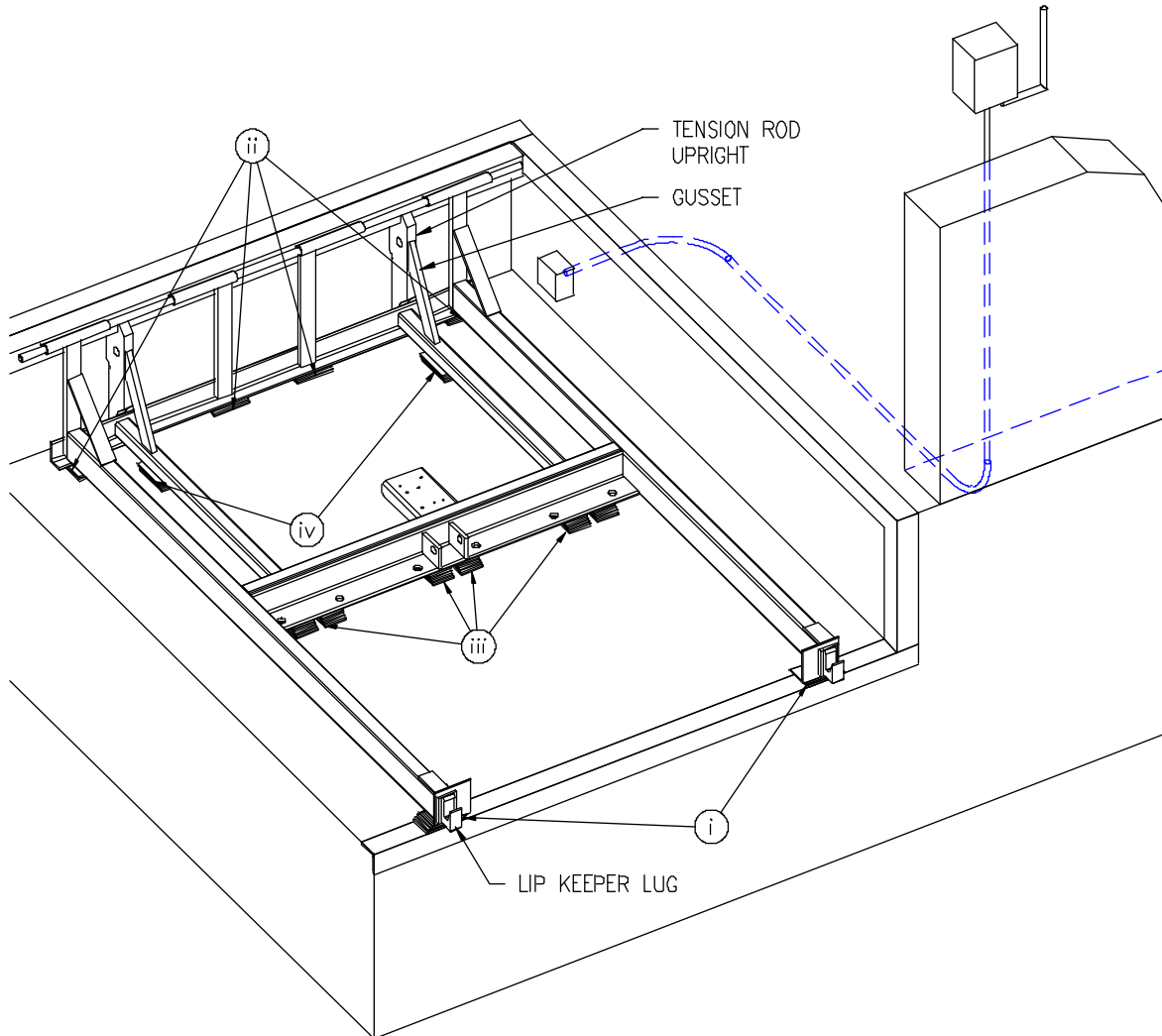


1. Have the control panel mounted and wired by a qualified electrician. See electrical diagram inside the control panel. Wires shown as dashed lines are field connections.

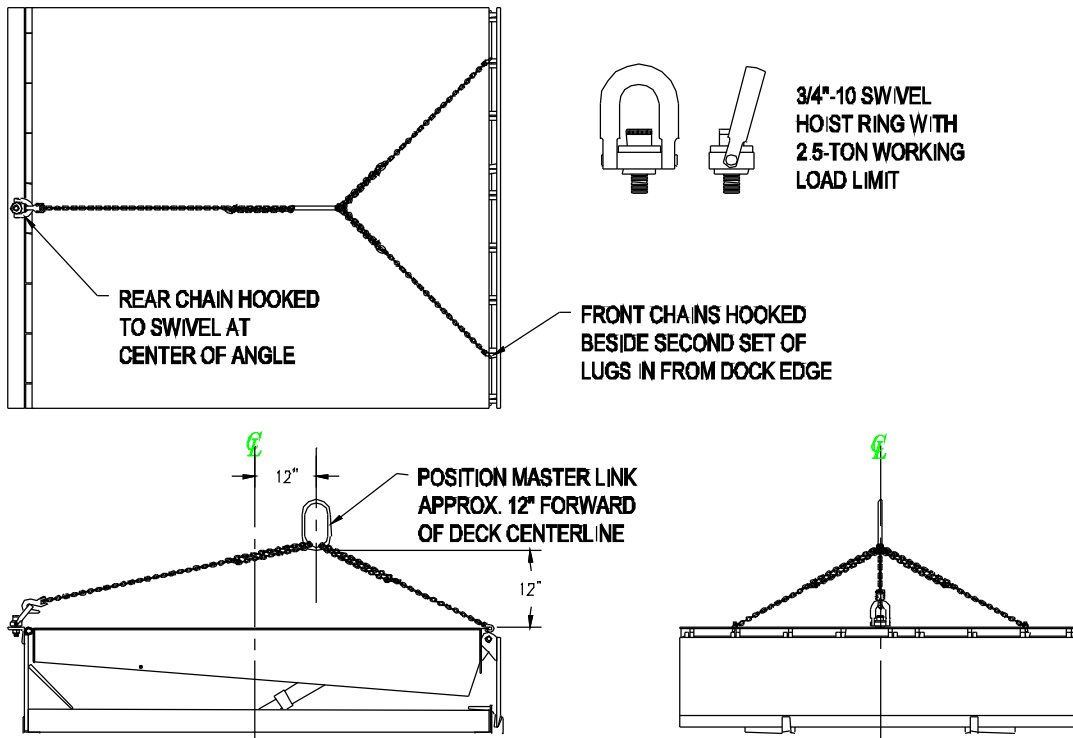
2. Shim heights may be established prior to the installation of the dock. Make sure shim heights all equal the same depth from the edge of the pit area. For best weld, stagger shims at least 1/4 inch. At this time, tack-weld the shims only. See below for shim locations. Recommended shim: 1/4" x 3" x 5" flat bar

Shims required at the following locations:

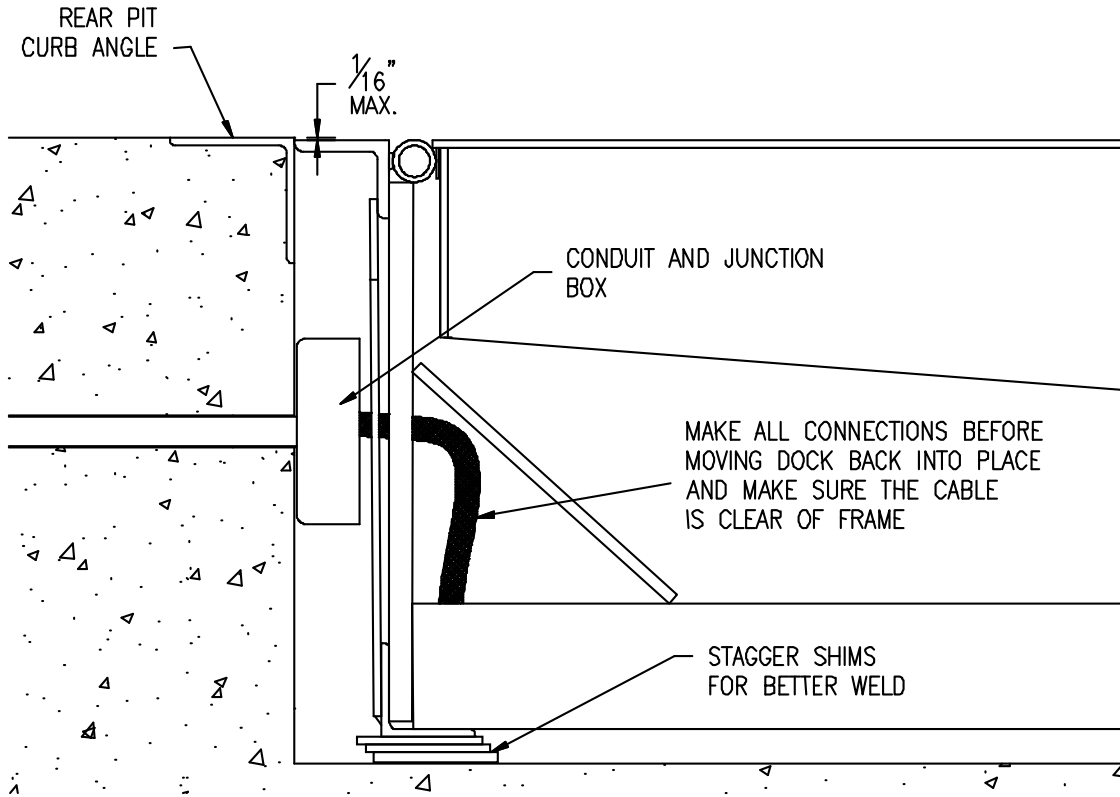
- i. Under both front frame angles directly behind the lip keeper lugs. (2 places)
- ii. Under lower rear frame angle at each hinge tube support upright. (4 places)
- iii. Under the cylinder mounting angle directly beside each anchor hole. (6 places)
- iv. Under base of each tension rod upright gusset. (2 places)



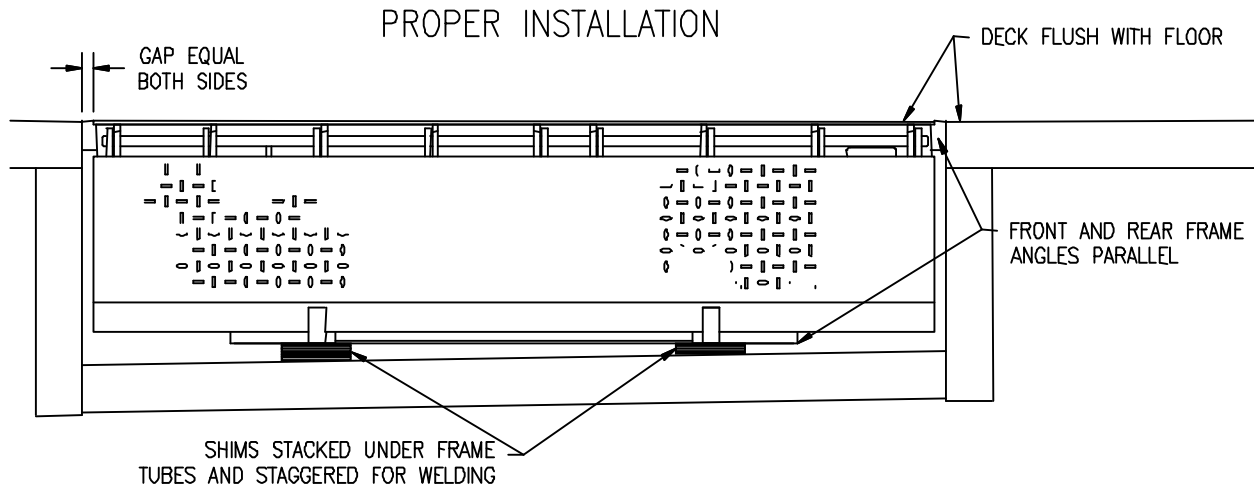
3. Attach lifting chains to dock leveler. All chains must be minimum grade 80 and chain hooks have a minimum 1-ton capacity. An endless master link should also be used to assist in the levelling of the dock leveler. Three chains must be used; one hooked at the center of the hinge angle, two hooked on the front deck plate outside the second set of lip lugs from the sides of the deck. Attach the chains so that the master link is approximately 12" forward of the center of the deck, and centered along the width.



4. Lift the deck approximately 6" and check that it is level. Adjust chains accordingly if required. Do not attempt to install the dock if it is not level. Damage to the unit or personal injury may result.
5. Remove straps holding electrical cable and attach plug (if required). Temporarily strap cable to rear frame upright so that it can be easily reached for connection to pit outlet.
6. Place dock into pit. Leave room between the dock leveler and the rear pit wall so that the electrical connections can be made.
7. Connect dock leveler to the source connection in the pit area. Ensure that when the dock leveler is pushed into place that the dock does not crush the cord.

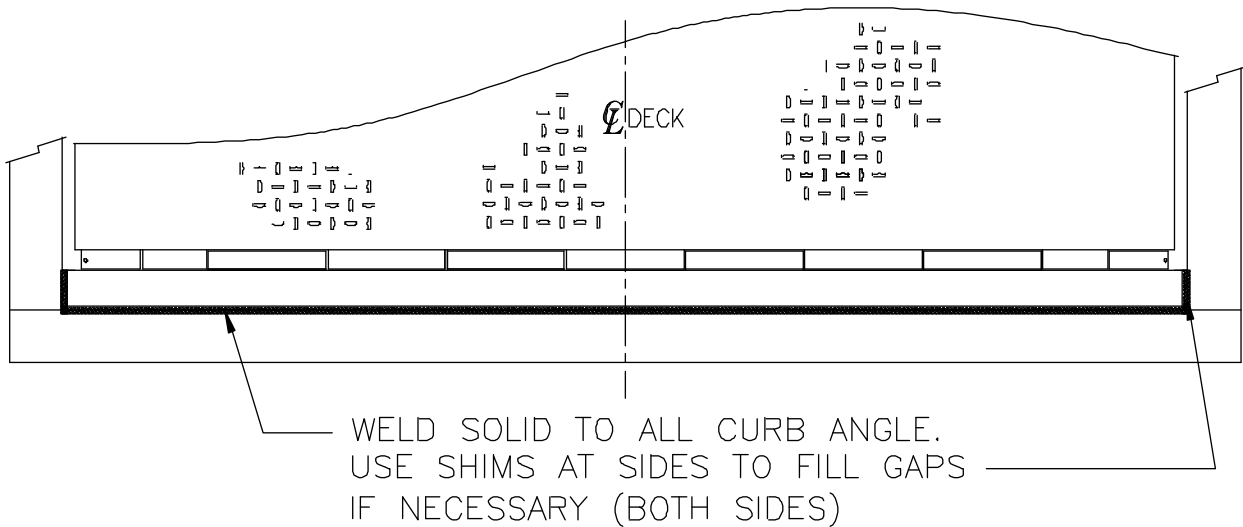


8. Move the dock so that the hinge angle is flush and tight to pit angle and is centered between side pit curb angles.
9. Remove the transport cables and raise the dock leveler. Install the maintenance supports (see Maintenance Stand section of this manual) and check the position of the shims. Re-position if necessary. There should be no more than 1/16" in height difference at any point between the pit curb angle and the dock leveler. Tack-weld the hinge angle to the pit curb angle.
10. Remove the maintenance supports and lower the dock to its stored position. Check that the dock is still squarely positioned and level with the pit sides. Add or remove shims as necessary.



11. Raise the deck and re-install the maintenance support. Weld the shims solidly together, and weld the shims to both the frame and the front angle where possible.

12. Weld the rear hinge angle solid to the rear and side pit curb angles as shown below.



13. Match drill holes in the cylinder mounting angle into the pit concrete. Use supplied wedge type anchors (supplied by Nordock) to secure. (6 places)

NOTE: Anchor installation

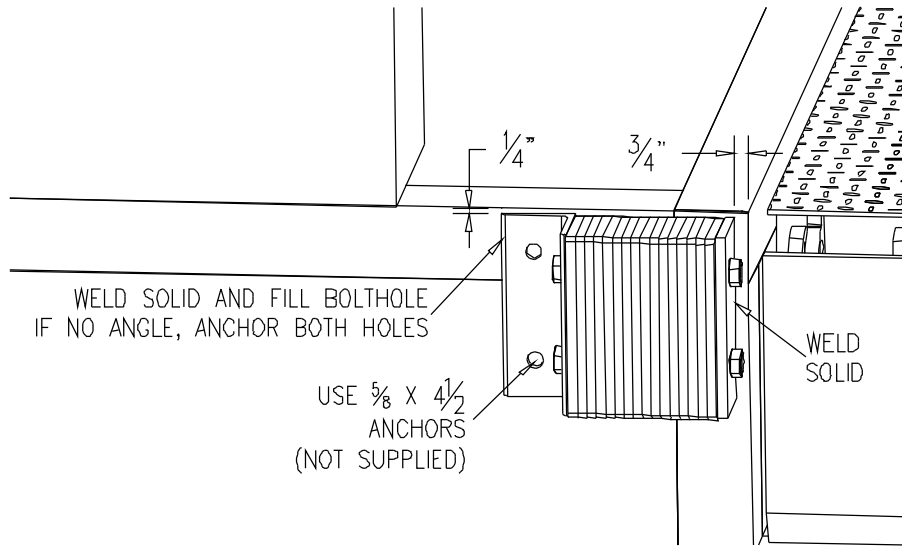
- **Must be installed to maximum depth**
- **Holes evacuated prior to anchor install**
- **Torque: 5/8" 80 ft-lb, 3/4" 110 ft-lb, 1" 300 ft-lb**

Correct installation will ensure consistent, efficient operation for many years to come.

Note: It is the installer's responsibility to complete any paint touch-up and dock area clean up that may be required.

Bumper Install

Bumpers should be installed as follows to prevent damage from trucks backing into the dock leveler.



Install bumper so that it is 1/4" below floor level for proper securing, and 3/4" away from the edge of the pit so that the heads of the bolts will clear the lip as it passes the bumper.

Weld the bumper wherever possible to the pit curb angle, and use 5/8" x 4-1/2" wedge anchors in the angle holes.

Operation



WARNING

Before operating or maintaining the dock leveler, read and follow the safety practices contained in this manual. Failure to follow the guidelines in this manual and those in effect in the workplace can result in serious bodily harm and equipment damage.

Note: If the truck to be serviced is below dock level, please see the additional instructions for Below Dock Control in this section.

Standard (Single Pushbutton) Control Panel

1. Push and hold the “RAISE” button. The ramp will rise and the lip will extend once the deck has reached its highest point. Release the button a few seconds* after the lip has fully extended and the deck will lower and rest on the truck bed. (* Holding the button for a few extra seconds ensures the lip will open further as the dock descends.)
2. Proceed with loading and/or unloading.
3. To return the dock leveler to its stored position, push and hold the “RAISE” button until the lip clears the bed. The lip will fold and when the button is released, the dock will return to its stored position.
4. Ensure the lip is seated in the lip keepers before walking or driving on the dock.

Below Dock Control

To lower the ramp without extending the lip for below dock level end loading, substitute item 1 in the preceding instructions with the following:

- 1a. Press the “RAISE” button until the ramp reaches its highest point and the lip extends approximately 2”.
- 1b. The ramp will lower below level and rest on the dock frame. Do not walk or drive on the dock until it has completely stopped lowering.

Optional (Lip Extend and/or On/Off Switch) Control Panel

1. If equipped, turn the ON/OFF switch to the ‘ON’ position, and pull the emergency stop pushbutton out.
2. Push and hold the “RAISE” button. The ramp will rise and once the lip has cleared the deck of the truck, press the “EXTEND” button to push the lip out. Release the button a few seconds after the lip has fully extended and the deck will lower and rest on the truck bed.
3. Proceed with loading and/or unloading.

4. To return the dock leveler to its stored position, push and hold the “RAISE” button until the lip clears the bed. The lip will fold and when the button is released, it will return to its stored position.
5. Ensure the lip is seated in the lip keepers before walking or driving on the dock.
6. Push in the “STOP” button and turn the ON/OFF button to the “OFF” position (if equipped).

Below Dock Control

To lower the ramp without extending the lip for below dock level end loading, substitute item 2 in the preceding instructions with the following:

- 2a. Press the “RAISE” button until the ramp clears the keepers and the truck bed by approximately 6” and release the button.
- 2b. Before the ramp returns to the keepers, press the “EXTEND” button to extend the lip approximately 2” out from its resting position. Release the button and the dock will rest on the frame. Do not walk or drive on the dock until it has completely stopped lowering.

Auto Return

In the event a truck pulls away from the dock before the lip is stored, the auto return feature will raise the ramp for a set time and the lip will store automatically. If this occurs check that the lip has stored properly in the lip store lugs, and it is recommended that all safety practices be reviewed.

Note: If the dock leveler is equipped with an auto return feature it is necessary to turn the selector button to the “OFF” position to perform the below dock control function. Follow the instructions and turn the selector to “OFF” as the ramp approaches full below dock position. Turn the switch to the “ON” position only when loading or unloading is complete, and all persons, equipment and material are cleared from the dock.

Troubleshooting



WARNING

Before operating or maintaining the dock leveler, read and follow the safety practices contained in this manual. Failure to follow the guidelines in this manual and those in effect in the workplace can result in serious bodily harm and equipment damage.

Note: The following section should be used as a reference guide only. **Only** qualified personnel should perform any adjustments or repairs. Contact Nordock Inc. or your local Nordock representative for service.

Motor does not operate when button is pressed

1. Check that the main power source is turned on.
2. Check that all installation connections are made.
3. Ensure motor voltage matches the incoming service.
4. Ensure pushbutton is functioning.

Motor operates but Dock Leveler does not raise

1. Check motor rotation.
2. Make sure dock leveler is not loaded.
3. Check cylinder and pump connection, ensuring there are no leaks.
4. Check for any damaged or broken components.

Dock leveler fails to lower



WARNING

DO NOT ENTER THE AREA UNDER THE DOCK LEVELER IF IT FAILS TO LOWER

1. Check that there are no obstructions beneath the dock.
2. Check that there are no bent or broken components.

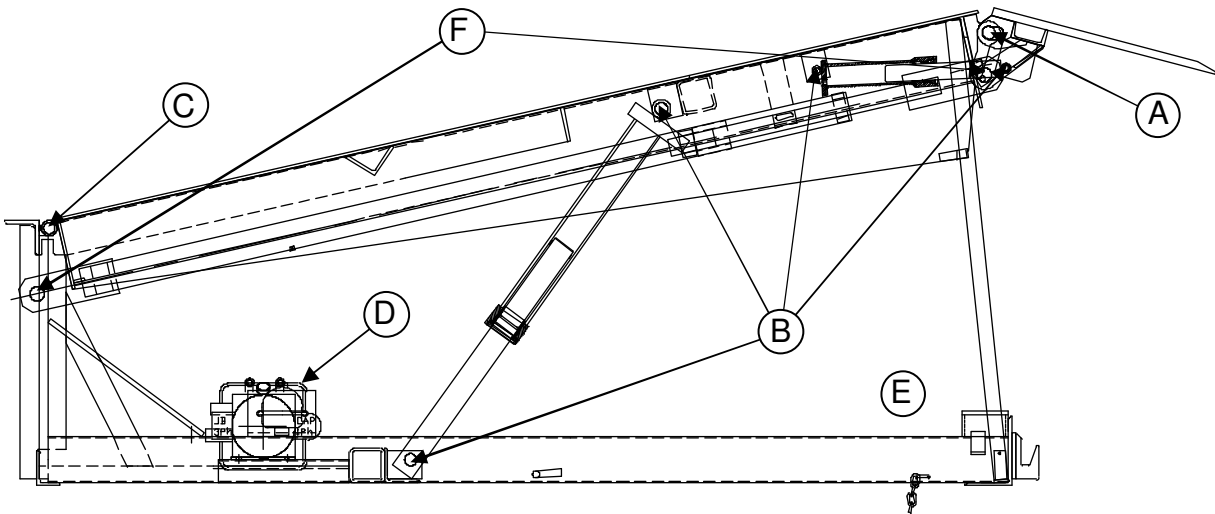
Note: DO NOT FORCE THE DOCK LEVELER DOWN BY ANY MEANS FOR ANY REASON.

Maintenance and Lubrication

 **WARNING**

Before operating or maintaining the dock leveler, read and follow the safety practices contained in this manual. Failure to follow the guidelines in this manual and those in effect in the workplace can result in serious bodily harm and equipment damage.

Note: Use only the lubricant grades specified in this manual. Failure to use the materials listed may lead to premature failure, and will void any warranty claims for the dock leveler.



Item	Lubrication	Adjustment	Cleaning
- A - Lip Hinge	Every 90 days Using grease	None	Remove debris as required
- B - Cylinder Pivot Pins	Every 90 days Using light oil	None	Remove debris as required
- C - Dock Hinge	Every 90 Days Using light oil	None	Remove debris as required
- D - Hydraulic Oil Reservoir	Check level every 90 days Change oil yearly	None	Remove and clean strainer and magnet yearly
- E - Pit Area	None	None	Every 90 days or as required to remove debris
- F - Tension Rod Pins	Every 90 days Using light oil	None	Remove debris as required

Acceptable Lubricants and Oils

Hydraulic

Oils used in the hydraulic system must meet minimum ISO grade 22 standard. E.G.:

COMMERCIAL OIL MULIT-VIS MV22
 MOBIL AERO HFA (49011)
 EXXON UNIVIS GRADE J13
 TEXACO AIRCRAFT OIL #1537BB
 U.S.OIL CO. #5606 (LOW TEMP)
 SHELL TELLUS T22

Grease

Grease used for hinges must meet a minimum EP-2 grade. E.G.:

CHEVRON DURA-LITH EP-2

Light Oil

Light oils used should have good penetration and adhesion qualities.

NOTE: Biodegradable fluids are available for use in the dock leveler. Please consult Nordock for information and instruction.

Hydraulic Adjustment

Note: Power units are set at the factory to optimum performance. Adjustment is rarely necessary and should only be performed by a qualified hydraulic technician.

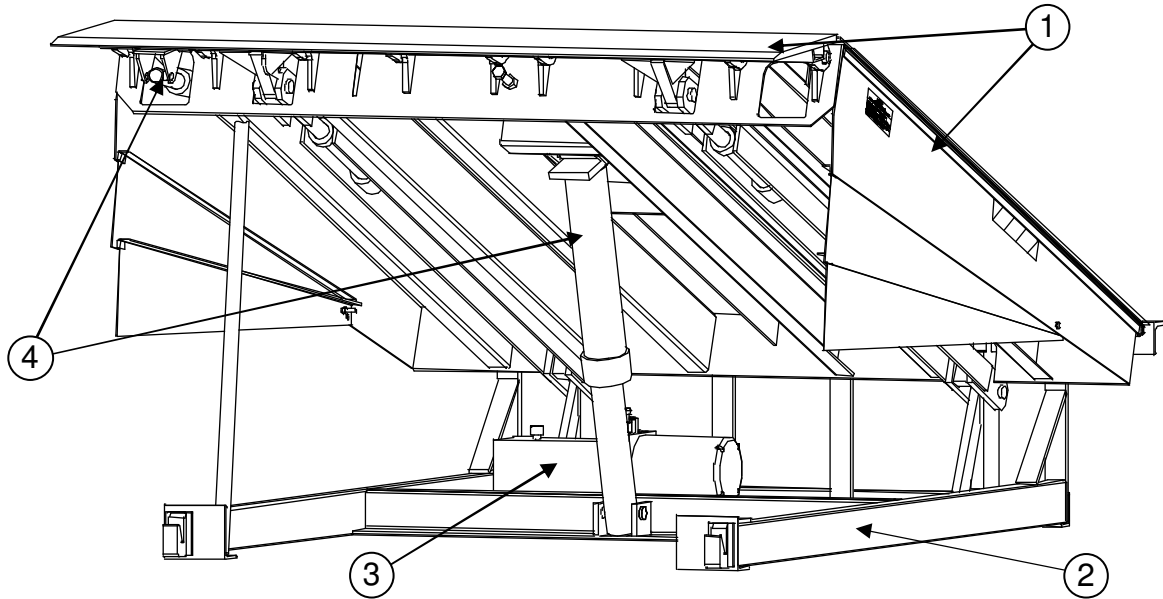
To make adjustments: Remove the outer cap, as required, and loosen the locknut.
 Use the chart below as an adjustment guide.

Item numbers below refer to Parts and Service Section 3 – Power Pack

Item	Name / Function	Adjustment
10	Sequence Valve (Blue Cap) -Sends flow to the lip cylinder when deck is at full height	-Required if lip extends before the deck raises. -Turn adjustment screw clockwise to control the lip extend. -Adjust in 1/8 turn increments.
11	Pressure Relief Valve (Red Cap) -controls maximum pressure	-Required if having motor stalling problems. -Turn counter-clockwise (loosen) to lower relief pressure. -Adjust in 1/8 turn increments.
12	Flow Control Valve -controls downward speed of deck.	-Turn adjustment screw clockwise (tighten) to slow speed or turn counter-clockwise (loosen) to increase speed. -Adjust in 1/8 turn increments.

For all- Retighten locknut and replace cap, if applicable, after adjustment is complete.

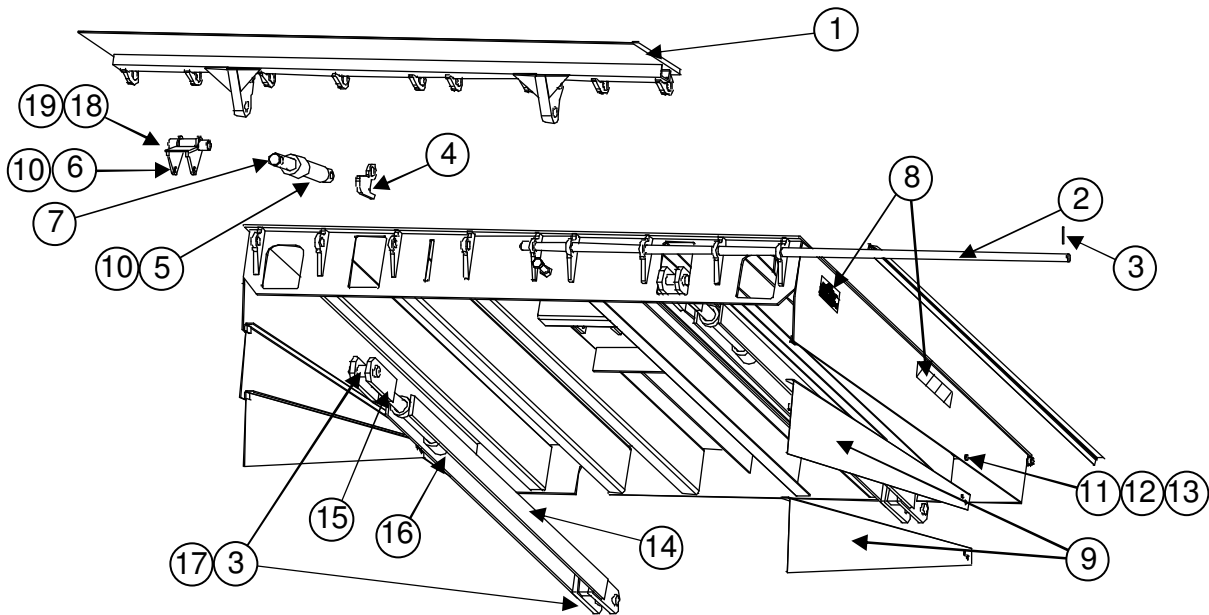
Parts and Service Tables



Item Number/ Section	Description
1	Deck and Lip Assembly
2	Frame Assembly
3	Power Pack and Related Hydraulic Components
4	Hydraulic Cylinders
5	Hydraulic Lines and Fittings (not shown)
6	Optional Equipment (not shown)
7	Control Panel (not shown)

Note: Not all parts and weldments are noted in this manual. Only those that are serviceable and/or replaceable will be listed. For additional information on those parts not included in this manual, please contact Nordock. Remember to make note of the model and serial number of the unit for accurate parts and service.

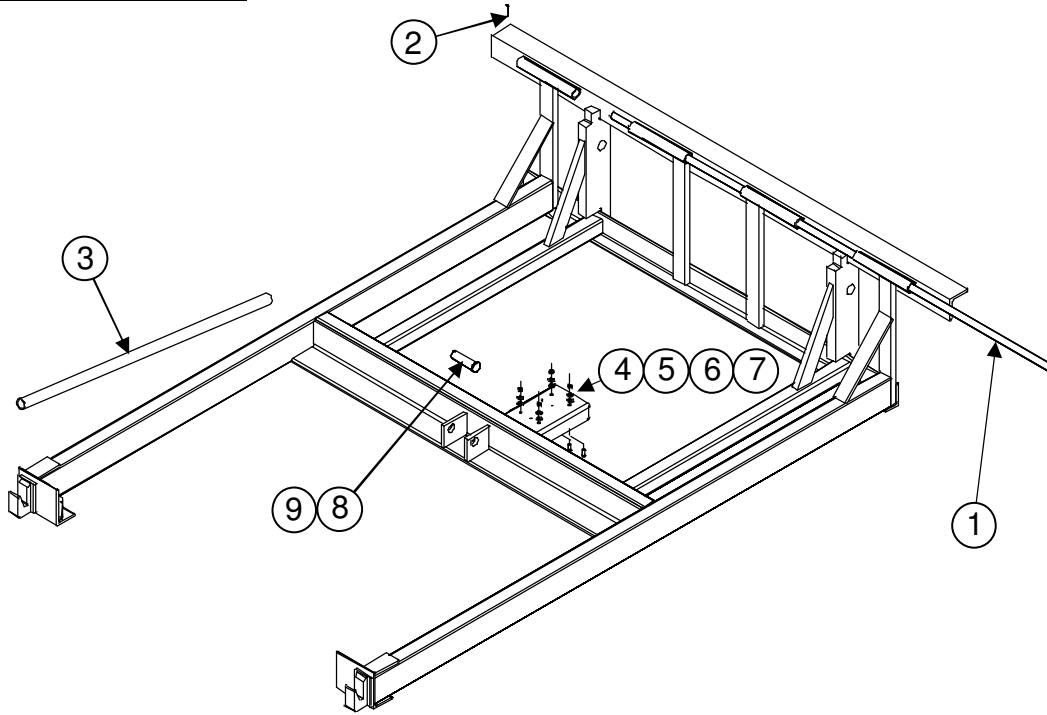
Section 1 – Deck and Lip Assembly



Item	Qty.	Description / Model			Note	
1	1	Lip Weldment			C/F	
2	1	Lip Hinge Rod	6' Wide 6.5' Wide 7' Wide	43-1333 43-1334 43-1177		
3	10	Cotter Pin, 1/4" x 1 3/4"			13-0992	
4	1	Lip Safety Lock Lug			43-1165	
5	1	Cylinder Mount Pin, Round, 1/2" CRR x 5-1/8" lg			43-0309	
6	1	Clevis Pin – Lip Extend, 1/2" x 3 1/2"			13-0399	
7	1	Lip Cylinder			C1-0009	
8	1	Dock leveler Decal Kit			42-0392	1
9	1 1 1	Telescoping Side Skirt Kit	6' Long Docks 8' Long Docks 10' Long Docks	42-0393 42-0394 42-0395		
10	3	Cotter Pin – 1/8" x 1			13-0171	
11	2	Washer, 3/8" SAE Flat			13-0203	
12	2	Bolt, 3/8"-16 x 1 1/4" long, Carriage Head			13-0122	
13	2	Nut, 3/8"-16, Nylock			13-0707	
14	2	Tension Rod Sleeve (not shown)	6' 8' 10'	20-35K 40-50K 20-35K 40-50K 20-35K 40-50K	42-2807 42-2804 42-2803 42-2801 42-2808 42-2806	
15	2	Tension Rod Threaded (not shown)		20-35K 40-50K	42-2802 42-2800	
16	2	Nut (not shown)		20-35K 40-50K	13-2822 42-3210	
17	4	Tension rod pivot pin (not shown)		20-35K 40-50K	43-1162 43-1152	
18	1	Lip cam assembly (c/w bushings #19)			42-3851	
19	2	Flange bushing			13-0508	

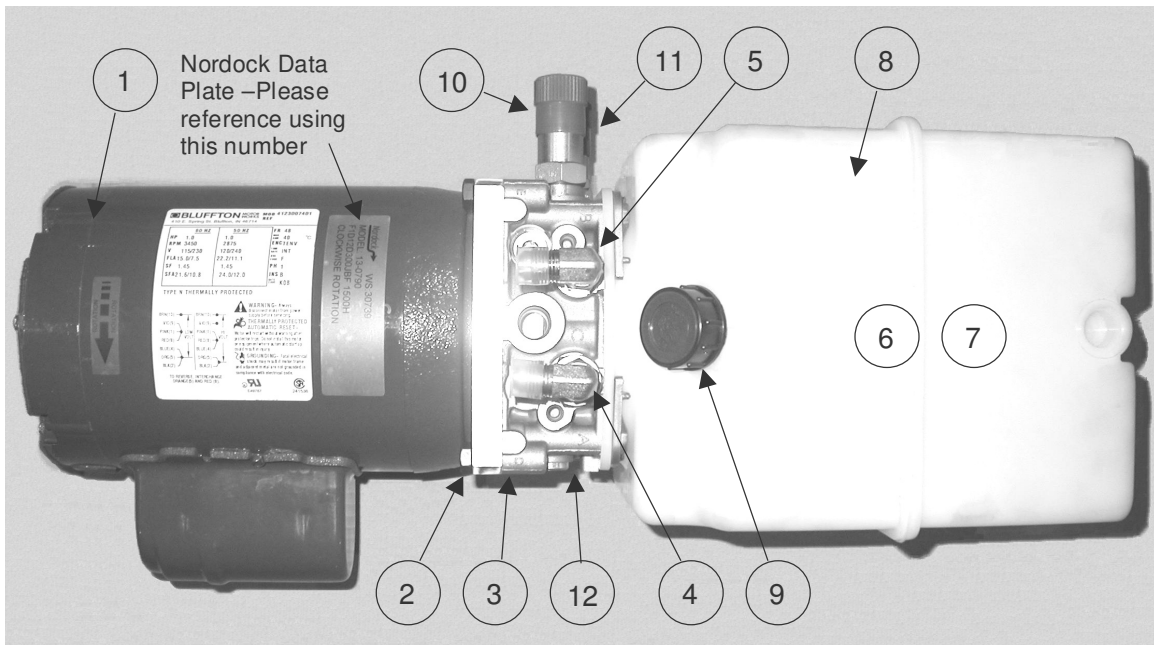
1 – For correct decal placement, see safety section.
C/F – Consult Factory

Section 2 – Frame



Item	Qty	Description / Model	P/N	Note
1	1	Rear Hinge Rod 6' Wide Docks 6.5' Wide Docks 7' Wide Docks	43-0154 43-0155 43-0156	
2	2	1/4" x 2" Roll Pin	13-0555	
3	2	Maintenance / Support Stand (Std. Dock)	43-0262	
4	4	Bolt, 1/4" - 20 UNC x 1, Plated	13-0623	
5	4	Nut, 1/4" - 20 UNC Plated	13-0334	
6	4	Washer, 1/4" SAE Flat	13-0272	
7	4	Washer, 1/4" Lock	13-0335	
8	1	Lower Cylinder Pin ~ 4-1/2" Lg.	43-0312	
9	4	Cotter Pin, 1/4" x 1 3/4"	13-0304	
10	1	Upper Cylinder Pin (not shown)	43-0310	

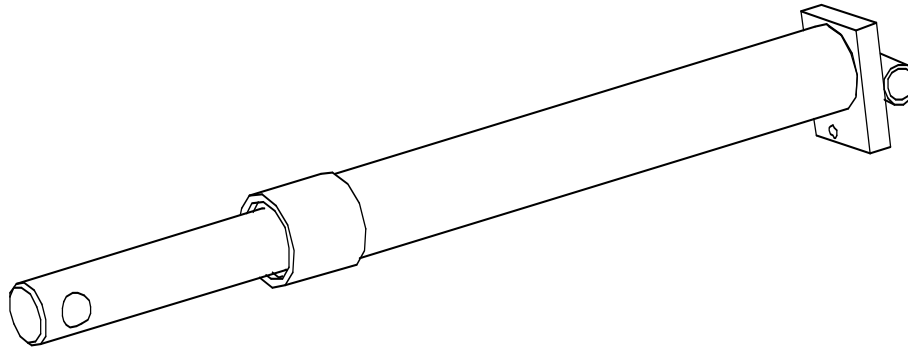
Section 3 – Power Pack and Related Hydraulic Components



Item	Qty	Description / Model		P/N	Note
		Complete Power Pack Assembly (Pts 1-12 below)	115 / 230 V 1 Ph 230 / 460 V 3 Ph 575 V 3 Ph	13-0790 13-0791 13-0792	
Power Pack Components:					
1	1	Drive Motor	115 / 230 v. 1 PH 230 / 460 v. 3 PH 575 v. 3 Ph		1
2	1	Motor Coupler	Standard Duty		
3	1	Manifold Assembly	Standard Duty		
4	1	Hydraulic Fitting, 90° 3/8" FNPT x #6MJIC, Deck Lift Port			
5	1	Hydraulic Fitting, 90° 3/8" FNPT x #6MJIC, Lip Ext. Port			
6	1	Pump Assembly (Inside Tank)			
7	1	Oil Pickup Screen and Tube (Inside Tank)			
8	1	Hydraulic Oil Reservoir			
9	1	Filler / Vent Cap			
10	1	Sequence Valve Cartridge			
11	1	Pressure Relief Valve Cartridge			
12	1	Flow Control Valve			

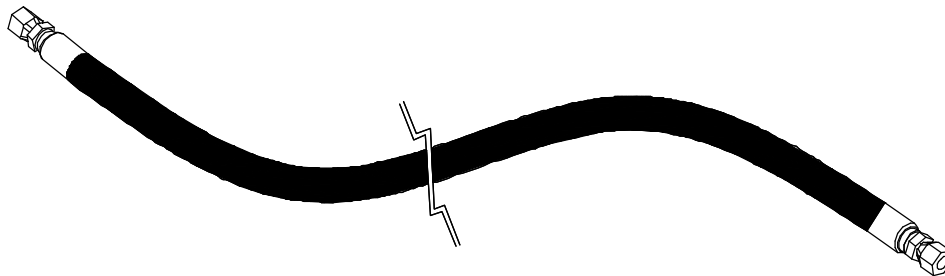
Note 1 – Consult factory when ordering individual power pack components.

Section 4 – Hydraulic Cylinders



Ram Dia.	Length	Description / Model	P/N	Note
2"		Seal Kit, all cylinders	C3-0020	
	25" Closed	Deck Lift Cylinder 17" Stroke	C1-0011	
	28" Closed	20" Stroke, all 10' Docks	C1-0030	

Section 5 – Hydraulic Lines and Fittings

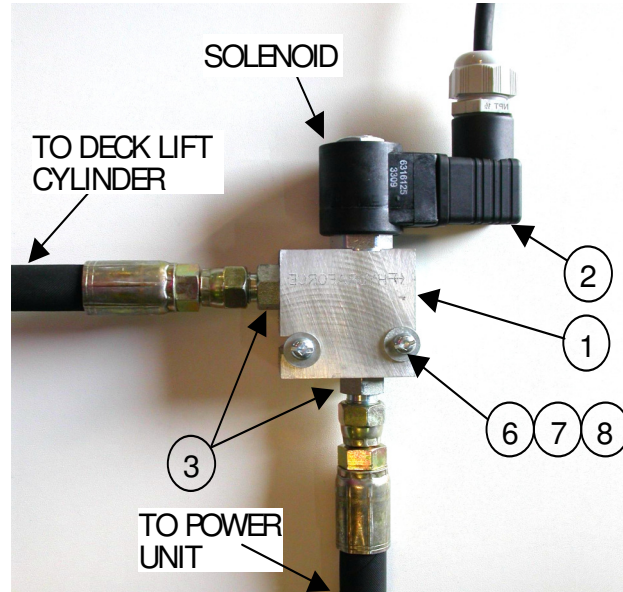


Dock length	Dia.	Description / Model	P/N	Note
6'	3/8"	Deck Lift, x 72" long	42-0383	
		Lip, x 48" long	42-0386	
		Hose kit, consisting of 1 each above hoses	13-1678	
8'	3/8"	Deck Lift, x 75" long	42-0384	
		Lip, x 54" long	42-0387	
		Hose kit, consisting of 1 each above hoses	13-1677	
10'	3/8"	Deck Lift, x 87" long	42-0385	
		Lip, x 78" long	42-0388	
Optional Emergency Stop:				
All	3/8"	Hose, Power Unit to Valve, x 24" long	42-1352	
All	3/8"	Hose, Deck Lift, x 72" long	42-0383	
Optional Remote Mount Power Pack, standard length:				
All	3/8"	Hose, Deck Lift & Lip, x 20'-0" long (2 hoses)	42-1545	

Note: All hoses are #6 with 2 straight FJIC ends

Section 6 – Optional Equipment

Lip Extend/Emergency Stop Valve:



Item	Qty	Description / Location	P/N	Note	
1	1	Solenoid Valve / Rear Frame Brace	Complete Assembly Solenoid only	13-0826 13-0175	
2	1	Receptacle, solenoid valve, Hershman		13-2371	
3	2	Hydraulic Fitting, Str. #6 JICM / 9/16 M ORB		13-1309	
4	1	Pushbutton / Control Panel, Lip Extend (not shown)		13-0317	
5	1	Mushroom Pushbutton, / Control Panel, Emergency Stop Button (not shown)		13-0318	
6	2	Screw, #10-24 x 1 1/2" long, plated, combo head		13-0274	
7	2	Washer, Lock, #10, plated		13-0948	
8	2	Washer, Flat, #10, plated		13-1956	

Note: See Section 5 for the hydraulic lines required for the Lip Extend/Emergency Stop valve.

Other Options:

Option	Qty.	Description / Location	P/N	Note
Auto Return	1	Limit Switch / Located on Frame Rail	13-0298	
	1	Timer / Control Panel	13-0156	
	1	On / Off Selector / Control Panel	13-0316	
Bumpers	2	Standard Bumper, AF410-11	61-0001	1
Weather Seals	6'	Brush Seal and Mounting Extrusion Kit	61-0025	
	8'	Brush Seal and Mounting Extrusion Kit	61-0024	
	10'	Brush Seal and Mounting Extrusion Kit, (3 pc)	61-0037	
Fall Safe	1	Velocity Fuse / Deck Lift Cylinder	13-0306	
Remote Mount Power Pack	1	Wall Mount Bracket	43-0428	
	4	Bolt, Hex, 1/4" – 20 UNC x 1"	13-0623	
	4	Nut, 1/4" – 20 UNC, Plated	13-0334	
	4	Washer, 1/4" SAE Flat	13-0272	
	4	Washer, 1/4" Lock	13-0335	

Note 1 – For custom bumper sizes and applications, please contact your nearest Nordock representative or call 1-866-885-4276.

Section 7 – Control Panels

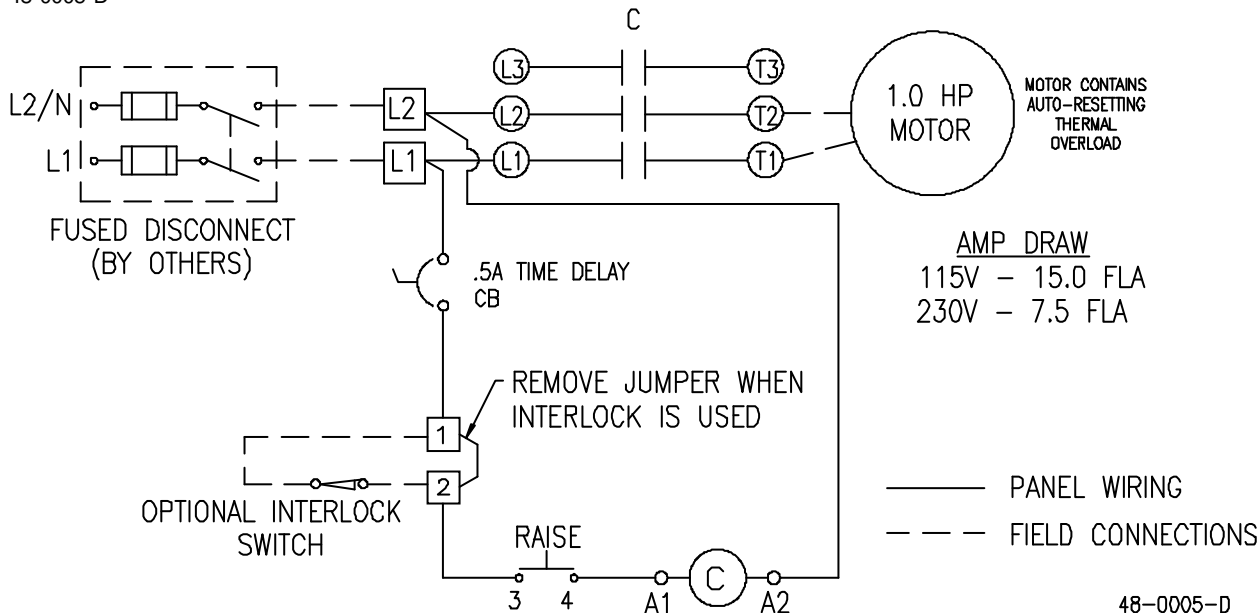
Volts/Ph	Description / Style	P/N	Note
115/1/60	Standard Panel / Single Pushbutton	48-0027	
	2 Button – Deck Raise and On/Off Switch	13-1980	
	3 Button – Deck Raise, Lip Extend, and Emergency Stop	13-1132	
	4 Button – Deck Raise, On/Off Switch, Lip Extend and Emergency Stop	13-1350	
230/1/60	Standard Panel / Single Pushbutton	48-0005	
	2 Button – Deck Raise and On/Off Switch		
	3 Button – Deck Raise, Lip Extend, and Emergency Stop	13-1982	
	4 Button – Deck Raise, On/Off Switch, Lip Extend and Emergency Stop	48-0004	
208/3/60	Standard Panel / Single Pushbutton	48-0024	
	2 Button – Deck Raise and On/Off Switch	13-1983	
	3 Button – Deck Raise, Lip Extend and Emergency Stop	13-2402	
	4 Button – Deck Raise, On/Off Switch, Lip Extend and Emergency Stop	13-1243	
575/3/60	Standard Panel / Single Pushbutton	48-0023	
	2 Button – Deck Raise and On/Off Switch	13-1154	
	3 Button – Deck Raise, Lip Extend and Emergency Stop	43-0261	
	4 Button – Deck Raise, On/Off Switch, Lip Extend and Emergency Stop	48-0019	
	3 Button – Deck Raise, Lip Extend and Emergency Stop	13-2500	
	4 Button – Deck Raise, On/Off Switch, Lip Extend and Emergency Stop	13-2426	

Wiring Diagrams

The following wiring diagrams may be wired in conjunction with other systems used with the dock leveler. Please consult Nordock Inc. or a qualified electrician before performing any work on the control panel or its components.

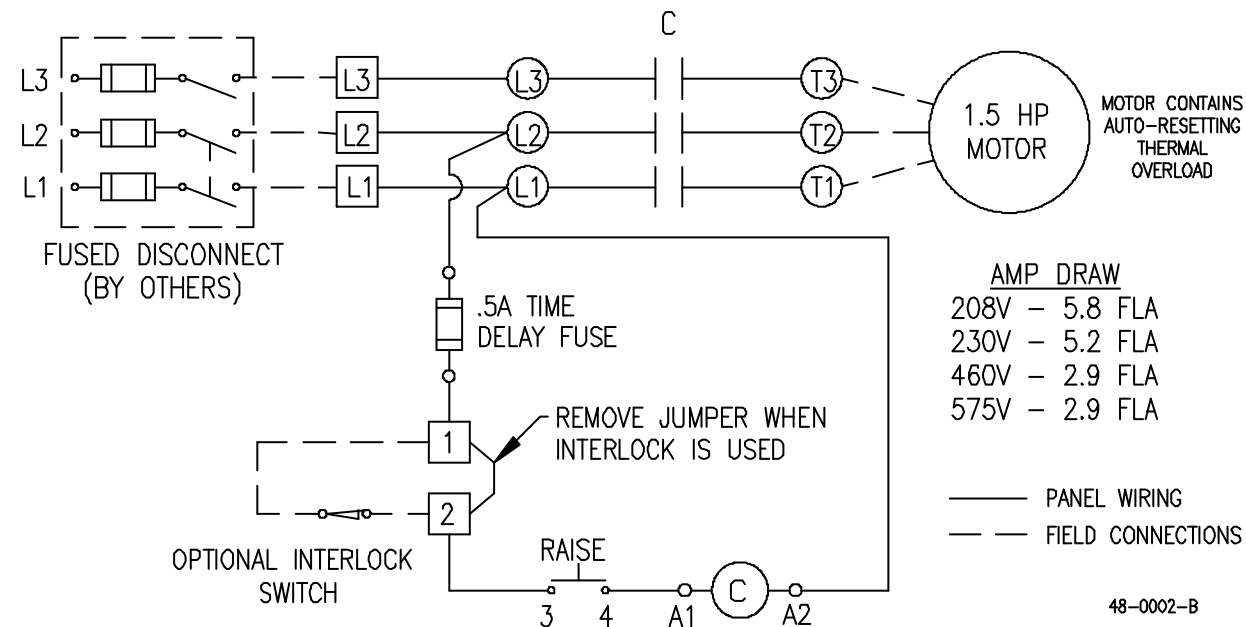
Single Phase 1 Button 110v-220v – Starter Only

48-0005-D



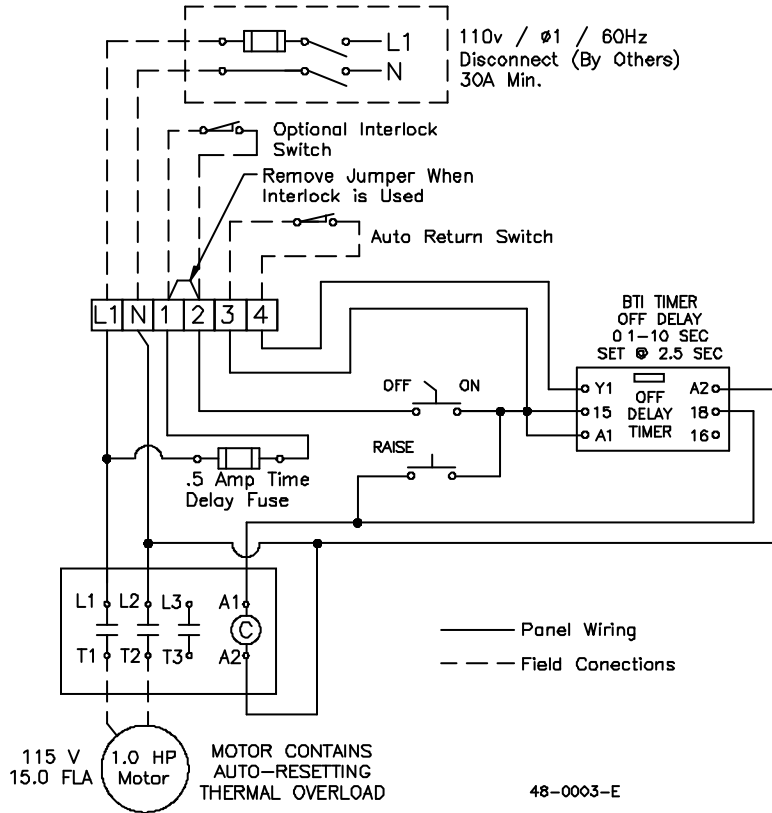
3 Phase 1 Button 208v-575v – Starter Only

48-0002-B



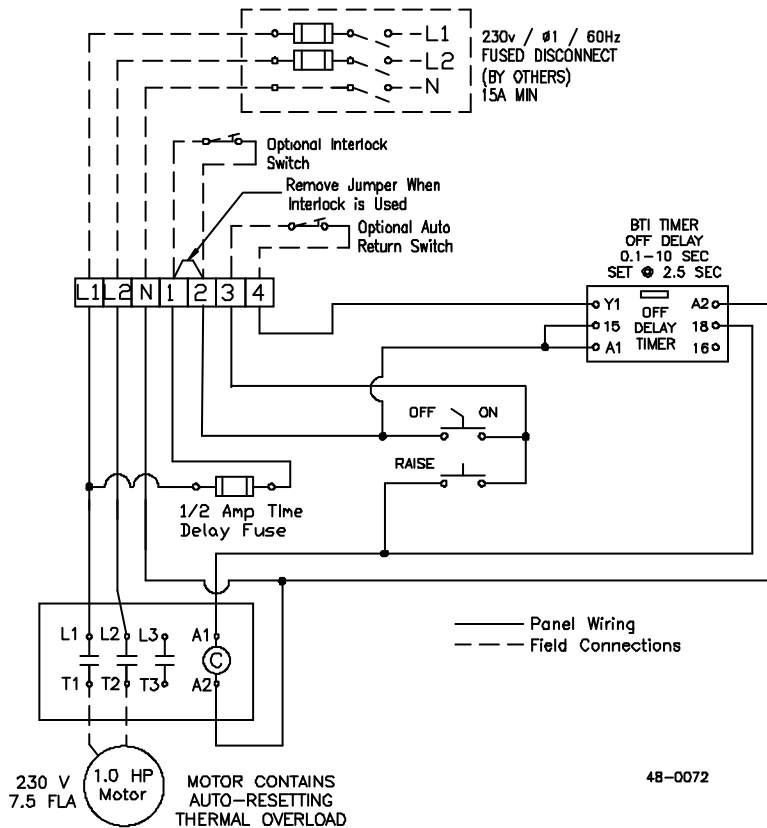
Single Phase 2 Button 110v - Starter and Auto Return

48-0003-E



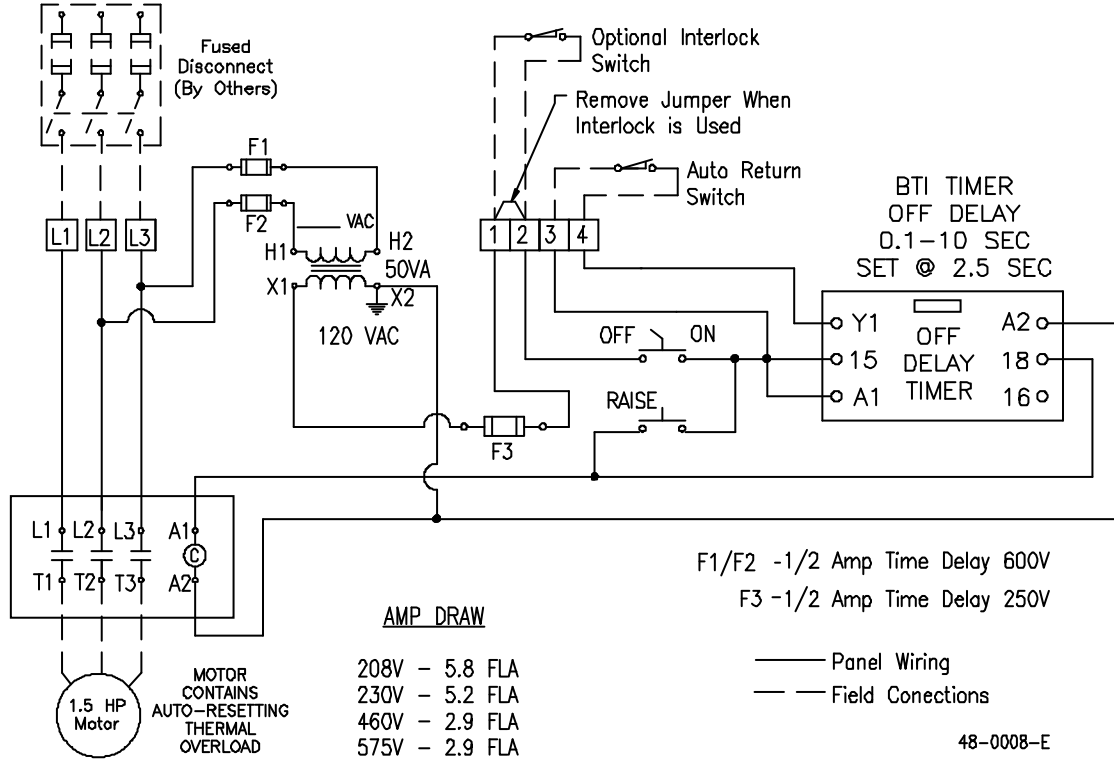
Single Phase 2 Button 220v - Starter and Auto Return

48-0072



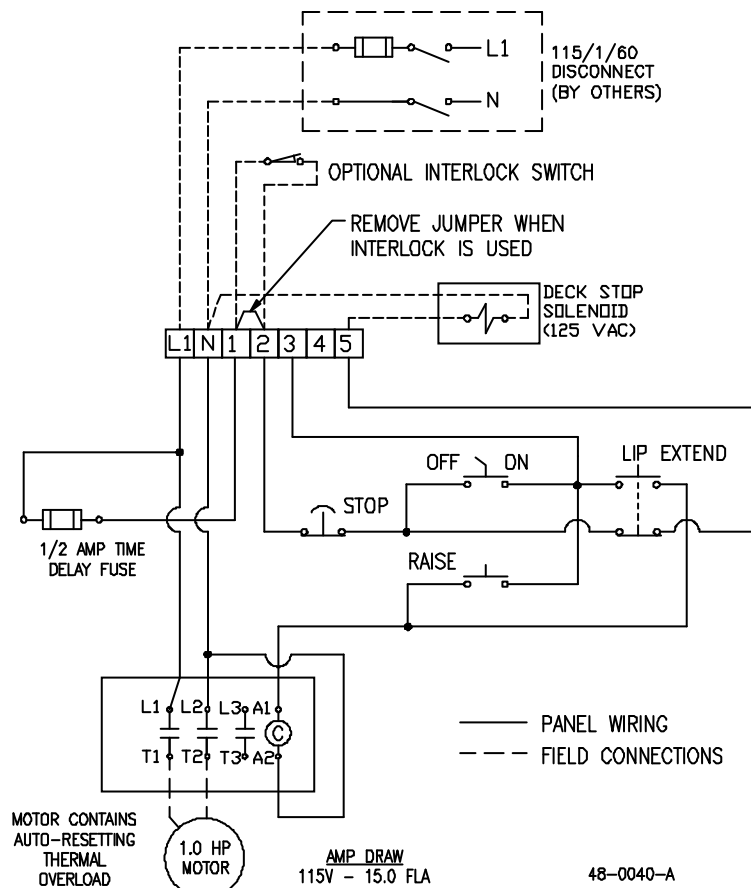
3 Phase 2 Button 208v-575v - Starter and Auto Return

48-0008-E



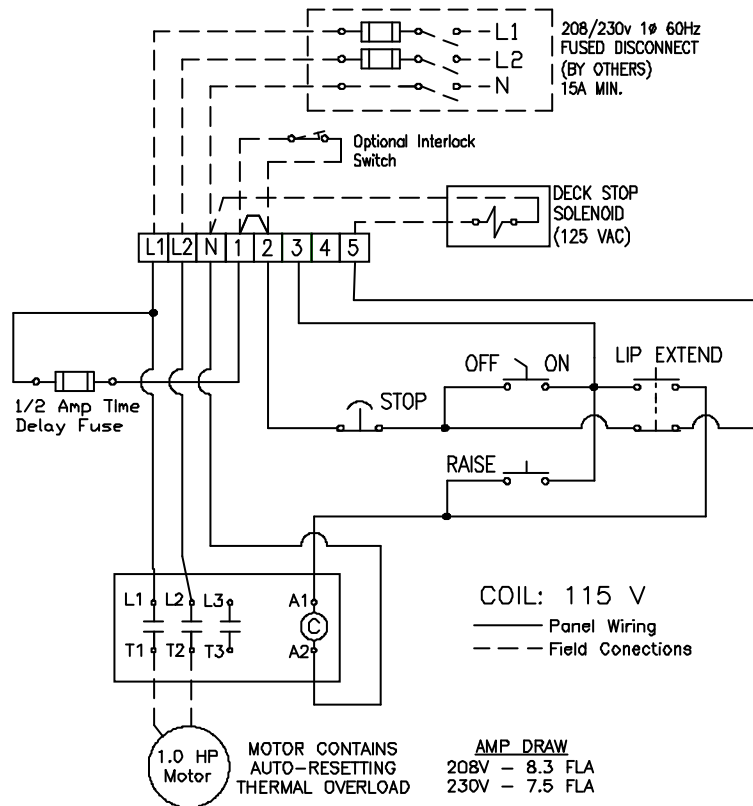
Single Phase 3 Button 115v - Starter, Lip Out and Emergency Stop

48-0040-A



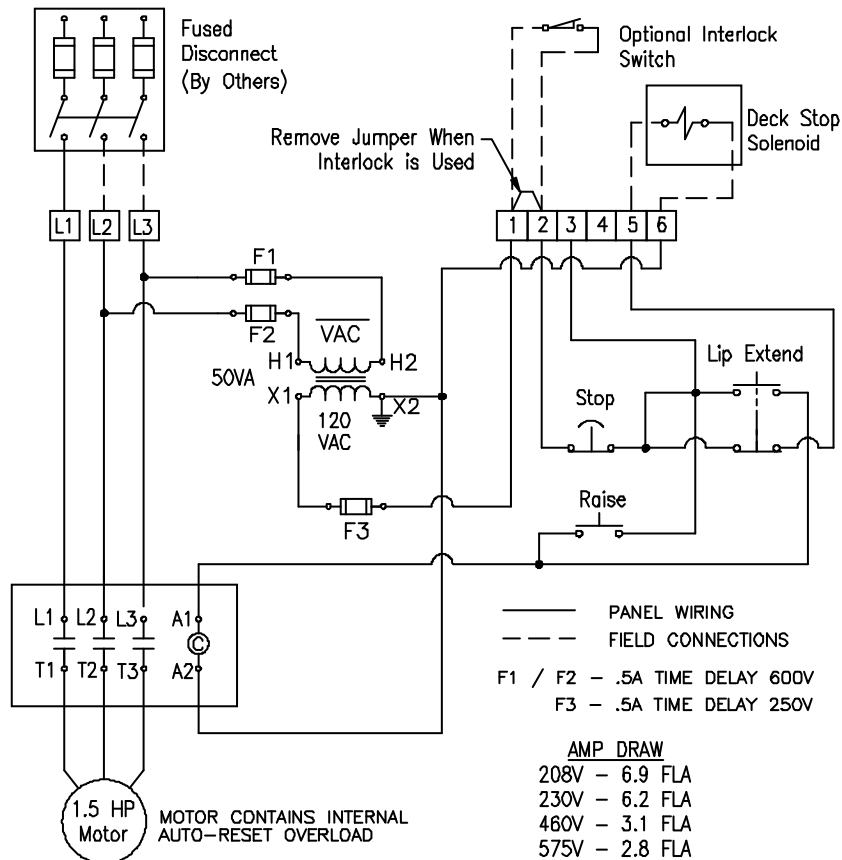
Single Phase 3 Button 220v - Starter, Lip Out and Emergency Stop

48-0014-B



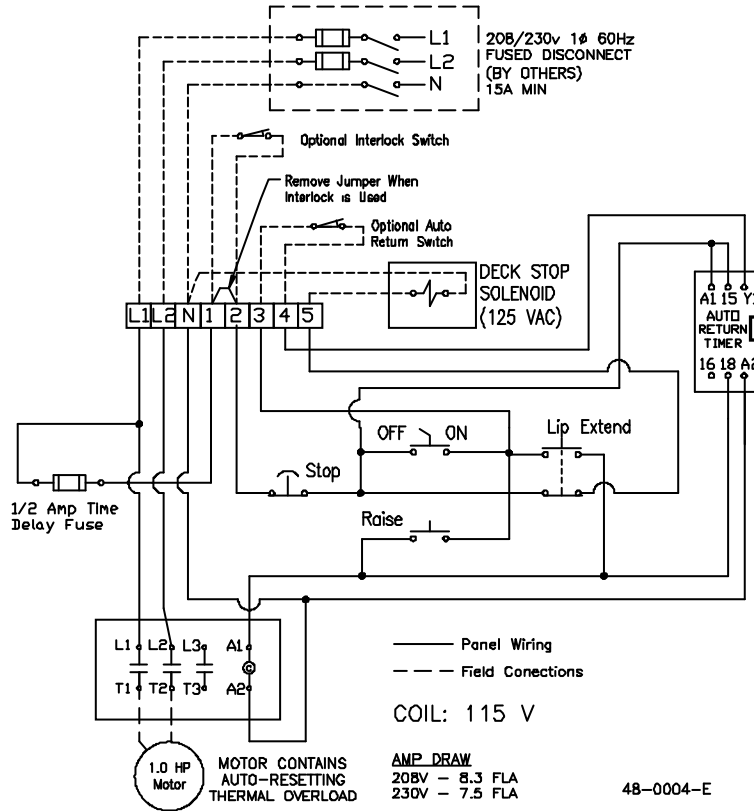
3 Phase 3 Button 208v-575v - Starter, Lip Out and Emergency Stop

48-0022-B



Single Phase 4 Button 220v - Starter, Lip Out, Emergency Stop and Auto Return

48-0004-E



3 Phase 4 Button 208v-575v - Starter, Lip Out, Emergency Stop and Auto Return

48-0019-C

