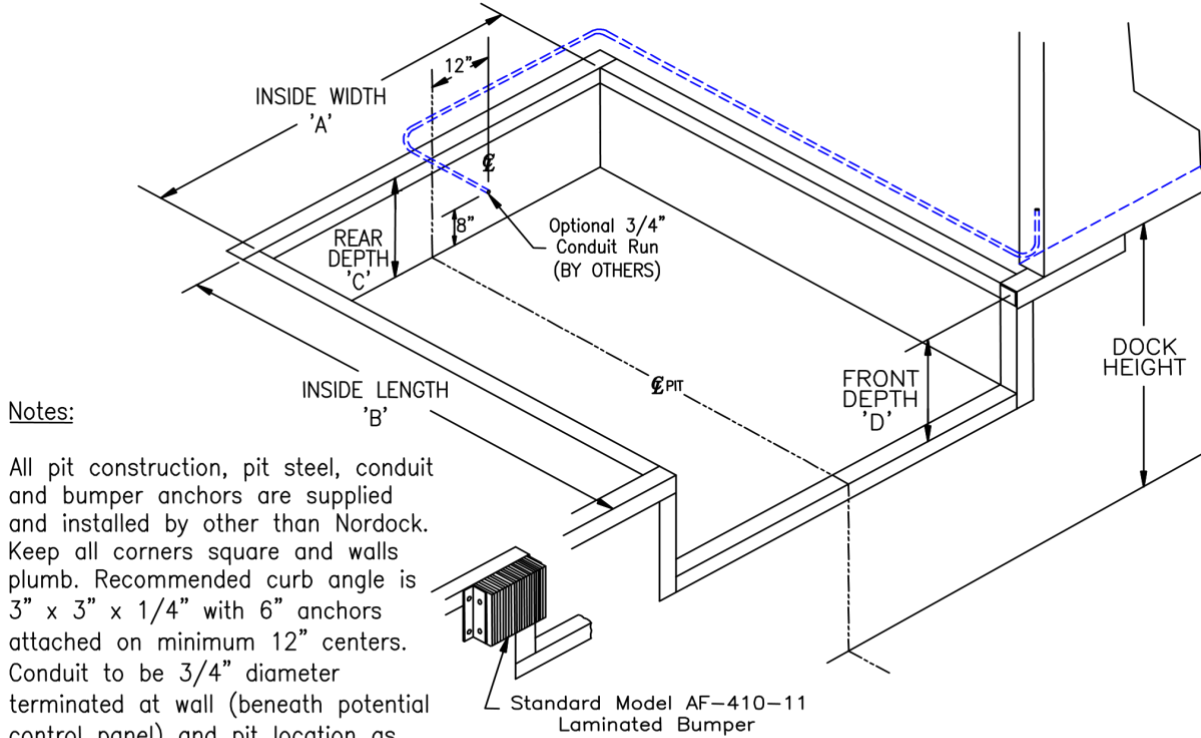


Element - NMF Series Dockleveler

STANDARD 23" Pit Construction Details



Notes:

All pit construction, pit steel, conduit and bumper anchors are supplied and installed by other than Nordock. Keep all corners square and walls plumb. Recommended curb angle is 3" x 3" x 1/4" with 6" anchors attached on minimum 12" centers. Conduit to be 3/4" diameter terminated at wall (beneath potential control panel) and pit location as shown. It is important to maintain a minimum of 8" thick well vibrated concrete behind all pit steel and down dock face.

Nominal Size	6' x 6'	7' x 6'	6' x 8'	7' x 8'
Pit Width 'A'	74"	85"	74"	85"
Pit Length 'B'	63"	63"	87"	87"
* Rear Pit Depth 'C'	* 23-1/2"	* 23-1/2"	* 23-1/2"	* 23-1/2"
* Front Pit Depth 'D'	* 24"	* 24"	* 24"	* 24"

* Note: Dimensions are for 23" Dockleveler depth. For 19", Refer to form 49-0304.

Model Number Composition: **NMF**-(Nominal Size)-(Capacity) (i.e. **NMF-78-35**)

Model:	Quantity:
30k 35k 40k 45k 50k Other: _____	
Lip: 16" 18" 20" Taper	
Job Reference:	
Location:	

CUSTOMER APPROVAL

Customer _____

Approved ☐

Approved as noted ☐

Signature _____

Position _____

Date _____