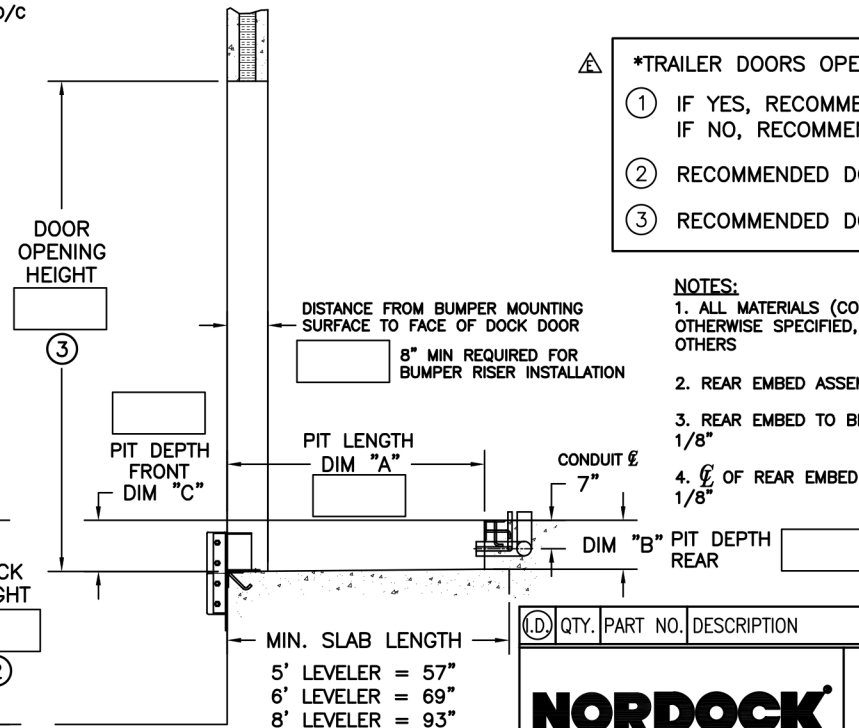
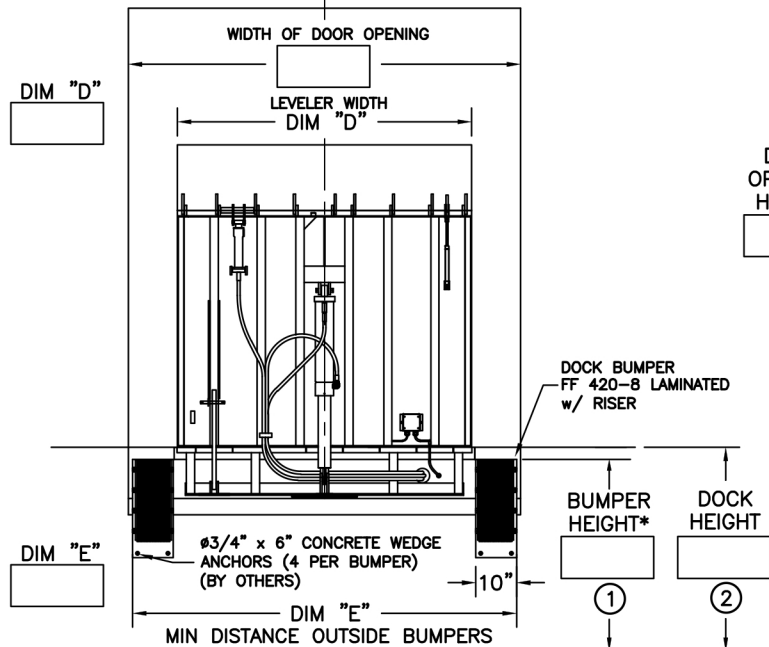


MODEL	PIT DIMENSIONS				
	DIM "A"	DIM "B"	DIM "C"	DIM "D"	DIM "E"
6 x 5	51"	12"	12-1/2"	72"	94"
6 x 6	63"	12"	12-1/2"	72"	94"
6 x 8	87"	12" (15" *)	12-1/2" (15-1/2" *)	72"	94"
6.5 x 5	51"	12"	12-1/2"	78"	100"
6.5 x 6	63"	12"	12-1/2"	78"	100"
6.5 x 8	87"	12" (15" *)	12-1/2" (15-1/2" *)	78"	100"
7 x 5	51"	12"	12-1/2"	83"	105"
7 x 6	63"	12"	12-1/2"	83"	105"
7 x 8	87"	12" (15" *)	12-1/2" (15-1/2" *)	83"	105"

* OPTION FOR DEEPER PIT TO INCREASE BELOW DOCK
SERVICE RANGE



- △ *TRAILER DOORS OPENING INSIDE: YES ☐ NO ☐
- ① IF YES, RECOMMENDED BUMPER HEIGHT: 42"
IF NO, RECOMMENDED BUMPER HEIGHT: 50"
- ② RECOMMENDED DOCK HEIGHT: 50"
- ③ RECOMMENDED DOOR OPENING HEIGHT: 10'0"

NOTES:

1. ALL MATERIALS (CONCRETE, STEEL, CONDUITS, ETC.), UNLESS OTHERWISE SPECIFIED, ARE TO BE SUPPLIED AND INSTALLED BY OTHERS
2. REAR EMBED ASSEMBLY TO BE PLUMB WITHIN 1/16"
3. REAR EMBED TO BE PARALLEL TO FRONT CURB ANGLE WITHIN 1/8"
4. CL OF REAR EMBED AND CL OF DOOR JAMB TO BE WITHIN 1/8"

I.D.	QTY.	PART NO.	DESCRIPTION	MAT'L	WGT.
NORDOCK					
PIT DETAIL & SURVEY SHEET NV, CONTINUOUS PIT					
DO NOT SCALE DRAWING - UNLESS OTHERWISE SPECIFIED DIM ARE IN INCHES ANGULAR TOL. $\pm 0/30'$ FRAC. TOL. $\pm 1/32'$ DEC. TOL. ± 0.010					
DATE:	07/09/11	DR:	AB	APP'D:	SCALE:
SHEET # 1 OF 1				DWG. NO.:	DNS
				REV:	△